

13.0 ARCHAEOLOGY, ARCHITECTURAL AND CULTURAL HERITAGE

13.1 INTRODUCTION

IAC Archaeology has prepared this chapter to assess the impact, if any, on the archaeological, architectural and cultural heritage resource of the proposed project at Ballincor Wind Farm, County Offaly and Tipperary (Figure 13-1).

This study determines, from existing records, the nature of the archaeological, architectural and cultural heritage resource in and within the study area of the proposed project using appropriate methods of study. The study areas for the assessment are described in section 13.2 below.

Desktop assessment is defined as a programme of study of the historic environment within a specified area or site that addresses agreed research and/or conservation objectives. It consists of an analysis of existing written, graphic, photographic, and electronic information in order to identify the likely heritage assets, their interests and significance and the character of the study area, including appropriate consideration of the settings of heritage assets (ClfA 2014). The assessment involved detailed interrogation of the archaeological and historical background of the proposed project. This included information from the Record of Monuments and Places of Counties Tipperary and Offaly, the topographical files of the National Museum of Ireland, and cartographic and documentary records. Inspection of the aerial photographic and satellite imagery coverage of the Site held by Tailte Éireann, Bing Maps, and Google Earth has also been carried out.

Field inspection was carried out during August 2025. The field inspection involved walking the proposed project area and its immediate environs, recording the terrain type and land usage, recording known and previously unknown features of archaeological, architectural or cultural heritage significance.

The assessment leads to the following:

- Determining the presence of known cultural heritage assets that may be affected by the proposed project;
- Assessment of the likelihood of finding previously unrecorded archaeological remains during the construction phase;
- Determining the potential pre-mitigation effects upon the setting of known cultural heritage assets in the study area
- Determining mitigation measures based upon the results of the above research; and
- Determining the residual effects, and their significance, following the implementation of mitigation measures.

A detailed description of the proposed project is provided in Chapter 2 of this Environmental Impact Assessment Report (EIAR).



13.1.1 Statement of Authority

This chapter was prepared by Faith Bailey (MA Cultural Landscape Management, BA (Hons) Archaeology, MIAI, MCIfA) and Deanna Lee (MA Archaeology, BA (Hons) Archaeology, MIAI). Faith is a licence eligible archaeologist, a member of the Chartered Institute of Field Archaeologists, a member of the Institute of Archaeologists of Ireland and has over 22 years' experience working in the commercial cultural heritage sector. She has been responsible for the production and delivery of multiple assessments and EIAR for renewable energy projects, including The Yellow River Wind Farm (Co. Offaly), Derrysallagh Wind Farm (Co. Sligo), Derreenacrinnig Wind Farm (Co. Cork) and the Robertstown Wind Farm (Co. Waterford). Deanna is a Member of the Institute of Archaeologists of Ireland and has six years' experience working in the cultural heritage sector, both fieldwork and consultancy. Deanna has been responsible for the production of impact assessments and EIAR, built heritage reports and fieldwork reports.

13.1.2 Definitions

In order to assess, distil and present the findings of this study, the following definitions, specific to this chapter, apply:

'Cultural Heritage' where used generically, is an over-arching term applied to describe any combination of archaeological, architectural, and cultural heritage features, where the term:

- 'Archaeological heritage' (AH) is applied to objects, monuments, buildings or landscapes of an (assumed) age typically older than AD 1700 (and recorded as archaeological sites within the Record of Monuments and Places).
- 'Built heritage' (BH) is applied to structures, buildings, their contents and settings of an (assumed) age typically younger than AD 1700.
- 'Cultural heritage' (CH), where used specifically, is applied to other (often less tangible) aspects of the landscape such as historical events, folklore memories and cultural associations.
- 'Townland boundary' (TB) is applied to the boundaries between townlands, which are Irish land units of considerable longevity, with many likely to represent much earlier land divisions.
- 'Areas of Archaeological Potential' (AAP) is applied to areas which have an increased archaeological potential due to the importance of certain landscape features to past societies, e.g. waterways.
- 'Designed Landscapes' (DL) is applied to post medieval demesne landscapes established as part of the development of large country houses.



13.1.3 Consultation

Following the initial research, a number of statutory and voluntary bodies were consulted to gain further insight into the cultural background of the proposed project and study area, as follows:

Department of Housing, Local Government and Heritage (DoHLGH)

A scoping request was issued to the DAU of the DoHLGH, to which a response was received on the 3rd July 2024. The response requested that assessment be carried out for both the terrestrial and underwater archaeological resource. The archaeological assessment has been carried out during the course of this EIAR. It should be noted that there will be no impacts upon the archaeological resource.

A scoping request was issued to An Taisce and The Heritage Council but no response was received.

13.1.4 Guidance and Legislation

The following legislation, standards and guidelines were consulted as part of the assessment.

- National Monuments Act 1930 to 2014 (Department of Housing, local Government and Heritage);
- The Planning and Development Acts 2000 to 2024 (Department of Housing, local Government and Heritage);
- Planning & Development Regulations 2001–2018 (Department of Housing, local Government and Heritage);
- Heritage Act, 1995, as amended;
- Frameworks and Principles for the Protection of the Archaeological Heritage, 1999, (formerly) Department of Arts, Heritage, Gaeltacht and Islands;
- Architectural Heritage (National Inventory) and Historic Monuments (Miscellaneous Provisions) Act, 1999 and the Local Government (Planning and Development) Acts 2000–2018;
- Historic and Archaeological Heritage and Miscellaneous Provisions Act 2023;
- European Convention on the Protection of the Archaeological Heritage (Valletta Convention 1992);
- The European Landscape Convention (Florence Convention 2000);
- The Granada Convention (Convention for the Protection of the Architectural Heritage of Europe, 1985); and
- Architectural Heritage Protection: Guidelines for Planning Authorities 2011.
- Guidelines on the information to be contained on the Environmental Impact Assessment Report (EPA, 2022).



- European Commission (2020). Guidance document on wind energy developments and EU nature legislation. Publications Office of the European Union, Luxembourg
- Leitrim County Council (2023). Leitrim County Development Plan 2023–2029.

The National Monuments Act 1930, as amended by various acts including but not limited to, the National Monuments (Amendment) Act 1954, the National Monuments (Amendment) Act 1987, the National Monuments (Amendment) Act 1994 and the National Monuments (Amendment) Act 2004 (together the National Monuments Acts) make provision for the protection and preservation of national monuments, archaeological monuments and archaeological objects in Ireland. The description of the existing environment in this chapter takes account of those statutory designations and the chapter takes account of the legislative monitoring and licencing requirements as mitigation.

The Historic and Archaeological Heritage and Miscellaneous Provisions Act 2023 (the 2023 Act) was enacted by the Oireachtas in late 2023 and aims to address a range of structural issues, simplify terminology, as well as provide a single accessible piece of legislation. At the date of writing many sections of the 2023 Act have yet to commence. It is not anticipated that this will result in statutory protection being extended to any potential receptors apart from those already considered in this chapter and the chapter already identifies as mitigation the various archaeological investigations and licencing requirements that will come into force when the 2023 Act is commenced. Accordingly, the EIAR conclusions are likely to be unchanged should the 2023 Act commence fully while the application is moving through the planning process.

13.2 METHODOLOGY

13.2.1 STUDY AREA DEFINITIONS

The definition of the study areas utilised for the assessment of the proposed project are detailed in Table 13-1. The determination of study areas is based on professional judgement, given there are no national guidelines available with regards to how the development of wind farms may impact on the archaeological, architectural and cultural heritage resource. The study area for the proposed wind farm site is large, due to the potential indirect effects that may occur in the relation to the setting of archaeological, architectural and cultural heritage sites. The study area for the proposed grid connection route (GCR) and the proposed turbine delivery route (TDR) is smaller as the footprint of these works are small-scale and the proposed GCR will be buried beneath the existing road network (for the most part). The proposed TDR will include accommodation works and oversail at one point where the N68 and the R492 converge (see Chapter 2 (Description of the Proposed Project) of this EIAR for full description). The remainder of the TDR is screening out of assessment given it will be located within the existing road network.

Table 13-1: Study Area Definitions

PROPOSED PROJECT ELEMENT	STUDY AREA	SITE TYPES
Proposed turbines	10 km from the proposed turbines	All sites of International and National significance, including UNESCO WHP (and tentative list), National Monuments



PROPOSED PROJECT ELEMENT	STUDY AREA	SITE TYPES
		under state care or guardianship and any sites subject to a Preservation Order.
Proposed turbines	5 km from the proposed turbines	All archaeological, architectural and cultural heritage assets subject to statutory protection, including sites listed in the RMP and RPS, NIAH structures and demesne landscapes.
Proposed turbines	2 km from the proposed turbines	All previously unrecorded sites or structures of cultural heritage merit, such as buildings of architectural heritage merit (not included in the RPS/NIAH) and archaeological sites not included in the RMP.
Proposed Grid Connection Route (GCR)	50 m	All recorded and previously unrecorded cultural heritage sites.
Turbine Delivery Route (TDR) intervention points	50 m	All recorded and previously unrecorded cultural heritage sites.

13.2.2 Desktop Assessment

The following sources were examined, and a list of heritage assets and areas of archaeological, architectural and cultural heritage potential was compiled:

- United Nations Educational, Scientific and Cultural Organization (UNESCO);
- Record of Monuments and Places for County Offaly and Tipperary;
- Sites and Monuments Record for County Offaly and Tipperary;
- National Monuments in State Care Database;
- List of Preservation Orders;
- Register of Historic Monuments;
- Topographical files of the National Museum of Ireland;
- Cartographic and documentary sources relating to the receiving environment;
- Offaly County Development Plan (2021-2027);
- Tipperary County Development Plan (2022-2028);
- National Inventory of Architectural Heritage County Offaly and Tipperary (Architectural & Garden Survey);
- Aerial photographs;
- Excavations Bulletin (1970-2025); and



- Place name analysis

United Nations Educational, Scientific and Cultural Organization (UNESCO):

The function of a UNESCO World Heritage list is to encourage member states to protect and manage their natural and cultural heritage. Properties considered for inclusion have cultural, historical, scientific or other significance, considered to be of outstanding value to humanity. There are three sites inscribed onto the UNESCO World Heritage List on the island of Ireland. These comprise the Giant's Causeway and Causeway Coast, Brú na Bóinne and Skellig Michael, none of which lie within 10km of the proposed project. UNESCO includes a tentative list of potential properties to be added to the WHP list. One of these sites is located within 10km of the proposed project and comprises the Birr Castle Demesne Great Telescope (The *Leviathan*, 1845), designated as part of the Historic Astronomical Observatories of Ireland. The site is located c. 5.27km northeast of Turbine 1.

Record of Monuments and Places, Sites and Monuments Record and National Monuments

Record of Monuments and Places (RMP) was established under Section 12 (1) of the National Monuments Act 1994 (as amended) which provides that the Minister for Housing, Local Government and Heritage (DoHLGH) shall establish and maintain a record of monuments and places (RMP) where it is known that such monuments exist. The record comprises of a list of monuments and relevant places and mapping showing each monument and relevant place in respect of each county in the State. Sites recorded on the RMP all receive statutory protection under the National Monuments Act. All sites listed on the RMP are referred to as Archaeological Heritage (AH sites) within this assessment.

Sites and Monuments Record (SMR) holds documentary evidence and records of field inspections of all known archaeological sites and monuments. Some information is also held about archaeological sites and monuments whose precise location is not known e.g. only a site type and townland are recorded. These are known to the National Monuments Service as termed 'un-located sites' and cannot be afforded legal protection. As a result, these are omitted from the RMP. SMR sites are also listed on a website maintained by the DoHLGH – www.archaeology.ie. All sites listed on the SMR are referred to as Archaeological Heritage (AH sites) within this assessment.

It should be noted that revisions are proposed to the RMP and SMR, with some sites listed as redundant records and proposed for removal and other, newly discovered sites, proposed for inclusion. As the revisions have yet to take place, all current RMP/SMR sites are listed as AH sites within this assessment, with the relevant detail provided as to the nature and extent of each site included.

National Monuments in the State Care Database is a list of all the National Monuments in the State guardianship or ownership. Each is assigned a National Monument number whether in guardianship or ownership and has a brief description of each monument. A National Monument receives statutory protection and is described as 'a monument or the remains of a monument the preservation of which is a matter of national importance by reason of the historical, architectural, traditional, artistic or archaeological interest attaching thereto' (National Monuments Act, 1930, Section 2). There are two National Monuments located within the 10 km study area of the proposed wind farm. These comprise Lismacrory Mounds (AH77, Nat Mon No. 348), c. 4.63km to the west and Lackeen Castle (AH28, Nat Mon No. 378), c. 9.23km northwest.



The Minister for the DoHLGH may acquire National Monuments by agreement or by compulsory order. The State or Local Authority may assume guardianship of any National Monument (other than dwellings). The owners of National Monuments (other than dwellings) may also appoint the Minister or the Local Authority as guardian of that monument if the State or Local Authority agrees. Once the site is in ownership or guardianship of the State, it may not be interfered with without the written consent of the Minister.

Preservation Orders List and/or Temporary Preservation Orders can be assigned to a site or sites that are deemed to be in danger of injury or destruction. Orders are allocated under the National Monuments Act, 1930. Preservation Orders make any interference with the site illegal. Temporary Preservation Orders can be attached under the National Monuments Act, 1954. These perform the same function as a Preservation Order but have a time limit of six months, after which the situation must be reviewed. Work may only be undertaken on or in the vicinity of sites under Preservation Orders with the written consent, and at the discretion, of the Minister (DoHLGH). There are two sites that possess a Preservation Order within the 10 km study area of the proposed wind farm. Ballycurragh Hillfort (AH25, PO No. 23/1976), c. 9.23km northwest and a motte and bailey castle (AH109, PO No 43/1976), located 4.29km to the north.

Register of Historic Monuments was established under Section 5 of the National Monuments (Amendment) Act, 1987 and requires the Minister to establish and maintain such a record. Historic monuments and archaeological areas included in the register are afforded statutory protection under the National Monuments (Amendment) Act, 1987. The register also includes sites under Preservation Orders and Temporary Preservation Orders. All registered monuments are included in the RMP.

Topographical Files - National Museum of Ireland

The topographical files of the National Museum of Ireland are the national archive of all known finds recorded by the National Museum. This archive relates primarily to artefacts but also includes references to monuments and unique records of previous excavations. The find spots of artefacts are important sources of information on the discovery of sites of archaeological significance.

In order to establish if any new or previously unrecorded finds had been recovered from the Site these files, as available at the National Museum of Ireland and on Heritage Maps (www.heritagemaps.ie), were consulted for each townland within and immediately adjacent to the proposed project.

Cartographic Sources and Aerial Photography and LiDAR Coverage

Cartographic sources are important in tracing land use development within the proposed project site and its receiving environment as well as providing important topographical information on areas of archaeological potential and the construction of buildings. Cartographic analysis of all relevant maps has been made to identify any topographical anomalies or structures that no longer remain within the landscape. These include current and former townland and parish boundaries.

All sites of potential archaeological, architectural or cultural heritage merit identified during the map analysis and aerial photographic analysis are listed as Cultural Heritage (CH) sites within this assessment. Townland boundaries impacted by the proposed project are listed as TB sites within this assessment.



Documentary sources were consulted to compile background information on the archaeological, architectural and cultural heritage receiving environment of the proposed project. A full list of references is given in Section 13.9.

Aerial photographic and LiDAR coverage is an important source of information regarding the precise location of sites and their extent. It also provides information on the terrain and its likely potential for archaeology. Sources that were examined during this assessment include Tailte Éireann (1995–2013), Google Earth (2005–2025), Bing Maps (2025) and the Open Topographic Data Viewer.

Record of Protected Structures

Development Plans contain a catalogue of all the Protected Structures, archaeological sites and Architectural Conservation Areas within every county. The Offaly County Development Plan (2021–2027) and Tipperary County Development Plan (2022–2028) was examined as part of this assessment. All protected structures are referred to as Built Heritage sites (BH) as part of this assessment.

National Inventory of Architectural Heritage (NIAH)

The National Inventory of Architectural Heritage (NIAH) was established under the provisions of the Architectural Heritage (National Inventory) and Historic Monuments (Miscellaneous Provisions) Act 1999. It is a government-based organisation tasked with making a nationwide record of locally, regionally, nationally and internationally significant structures dating to post-1700 AD, which in turn provides local authorities with a guide as to what structures to list within the Record of Protected Structures. Only those structures of regional importance or above are included in the Minister’s recommendations for inclusion in the RPS. The NIAH have also carried out a nationwide desk-based survey of historic gardens, including demesnes that surround large houses. All NIAH structures are referred to as Built Heritage sites (BH) as part of this assessment.

Whilst the NIAH Garden Survey was utilised as part of this assessment, this was carried out in conjunction with detailed analysis of the first edition Ordnance Survey maps and field inspection, in order to identify any Designed Landscapes (DL) within the study area of the proposed wind farm.

Excavations Bulletin

Excavations Bulletin is a summary publication that has been produced every year since 1970. This summarises every archaeological excavation that has taken place in Ireland during that year up until 2010 and since 1987 has been edited by Isabel Bennett. This information is also available online (www.excavations.ie) from 1970–2025. Information from this resource is vital when examining the archaeological content of any area, which may not have been recorded under the SMR and RMP files. All previous excavations are listed as Excavations (EX).

Place Names

Place Names are an important part in understanding both the archaeology, history and cultural heritage of an area. Place names can be used for generations and in some cases have been found to have their roots deep in the historical past. The main references used for the place name analysis is Irish Local Names Explained by P.W Joyce (1870), and the Place Names Database of Ireland (www.loganim.ie).



13.2.3 Field Inspection

Field inspection is necessary to determine the extent and nature of archaeological, architectural, and cultural heritage remains and can also lead to the identification of previously unrecorded or suspected sites and portable finds through topographical observation and local information.

The field inspection for the proposed project was carried out during August 2025 and entailed:

- Noting and recording the terrain type and land usage;
- Noting and recording the presence of known and previously unknown features of archaeological, architectural or cultural heritage significance;
- Verifying the extent and condition of recorded sites and structures (RMPs/ RPS/ NIAH); and
- Visually investigating any suspect landscape anomalies to determine the possibility of their being anthropogenic in origin and of archaeological, architectural or cultural heritage significance.

13.2.4 Impact Assessment Methodology

The significance of potential effects has been evaluated using a systematic approach, based upon identification of the importance/value of receptors and their sensitivity to the proposed project development activity, together with the predicted magnitude of the impact. This is in accordance with the approach laid out in the Environmental Protection Agency's (EPA) "*Guidelines on Information to be Contained in Environmental Impact Statements*" (EPA 2022).

- Negative Impact: A change which reduces the quality of the environment, for example a change that will detract from or permanently remove an archaeological, architectural or cultural heritage site from the landscape;
- Neutral Impact: A change which does not affect the quality of the environment; or
- Positive Impact: A change which improves the quality of the environment, for example a change that improves or enhances the setting of archaeological, architectural or cultural heritage site.

The below terms are used in relation to the archaeological, architectural and cultural heritage and relate to whether a site will be physically impacted upon or not:

- Direct Impact: Where an archaeological/architectural/cultural heritage feature or site is physically located within the footprint of the proposed project and entails the removal of part, or all, of the monument or feature; and
- Indirect Impact: Where a feature or site of archaeological, architectural or cultural heritage merit or its setting is located in close proximity to the footprint of a development.



13.2.5 Sensitivity of Receptor

For each impact, the assessment identifies receptors sensitive to that impact and implements a systematic approach to understanding the impact pathways, magnitude and the level of effects on given receptors.

The definitions of receptor sensitivity for the purpose of the archaeology, architectural and cultural heritage assessment are provided in Table 13-2. This is based on the presence (or not) of statutory protection and the determination by the author.

Table 13-2: Criteria for determination of receptor sensitivity

SENSITIVITY	CRITERIA
Very High	Sites of International Importance: UNESCO World Heritage Properties (including tentative list) National Monuments Monuments subject to Preservation Orders
High	RMP Proposed RMP Record of Protected Structures (RPS) Architectural Conservation Area (ACA) Well-preserved demesne landscapes Previously unrecorded archaeological sites
Medium	SMR Sites listed on the NIAH (upstanding) Buildings not on NIAH/RPS (based on professional judgement) Moderately well-preserved demesne landscapes Townland boundaries
Low	Buildings not on NIAH/RPS (based on professional judgement) Poorly preserved demesne landscapes
Very Low	SMR – Record only or redundant record Proposed RMP – excavated Fully developed demesne landscapes

13.2.6 Magnitude of Impact

The scale or magnitude of potential impacts (both positive and negative) depends on the degree and extent to which the proposed activities may change the environment, which usually varies according to project phase (i.e. construction, operation and maintenance and decommissioning).

As per the EPA Guidelines (2022), the nature of impacts can be categorised as follows:

- Quality: Positive, neutral or negative
- Nature: Direct, indirect
- Probability: Likely or unlikely
- Duration: Momentary, brief, temporary, short-term, medium-term, long-term, permanent, reversible
- Frequency: Once, rarely, occasionally, frequently, constantly



The criteria used to assess the different impacts associated with the proposed project are shown in Table 13-3. The criteria have been defined in consideration of the “Guidelines on Information to be Contained in Environmental Impact Statements” (EPA 2022).

Table 13-3: Criteria for determination of Magnitude of Impact

MAGNITUDE	CRITERIA
Very High	These impacts arise where an archaeological, architectural or cultural heritage site, either below ground or upstanding, is completely and irreversibly destroyed.
High	An impact which, by its magnitude, duration or intensity, alters an important aspect of the archaeological, architectural and cultural heritage environment, including the setting of upstanding monuments/structures. An impact like this would be where part of a site would be permanently impacted upon, leading to a loss of character, integrity and data about an archaeological or cultural heritage feature/site.
Medium	A medium impact arises where a change to a structure/monument is proposed which though noticeable, is not such that the archaeological, architectural or cultural heritage integrity of the site is compromised. The change is likely to be consistent with existing and emerging trends. Impacts are probably reversible and may be of relatively short duration.
Low	An impact which causes changes in the character of the environment, such as a visual impact, which are not high or very high and do not directly impact or affect an archaeological, architectural or cultural heritage feature, structure or monument.
Very Low	An impact on an archaeological, architectural or cultural heritage feature or monument capable of measurement but without noticeable consequences.

13.2.7 Significance of Effects

An Impact Assessment Matrix (IAM) is used to determine the significance of an effect. In basic terms, the potential significance of an effect is a function of the sensitivity of the receptor and the magnitude of the impact, as shown in Table 13-4.

The matrix provides a framework for the consistent and transparent assessment of predicted effects although it is important to note that the assessments are based on the application of expert judgement.

The matrix provides levels of effect significance ranging from imperceptible to profound. For the purposes of this assessment, potential effects identified to be of significant significance or above (i.e., significant, very significant or profound) are considered to be “significant in EIA terms” and additional mitigation will be required. Potential effects identified as less than significant (i.e. moderate, slight, imperceptible or not significant) are considered to be not significant in EIA terms.

The definition of the Significance of Effects (as defined by the EPA 2022 Guidelines) are detailed in Chapter 1 of this EIAR (Introduction).



Table 13-4: Impact assessment matrix for determination of significance of effect

SENSITIVITY OF RECEPTOR	MAGNITUDE OF IMPACT				
	VERY HIGH	HIGH	MEDIUM	LOW	VERY LOW
VERY HIGH	Profound	Very Significant	Significant	Moderate	Slight
HIGH	Very Significant	Significant	Significant - Moderate	Moderate - Slight	Not Significant
MEDIUM	Significant	Significant - Moderate	Moderate	Slight	Imperceptible
LOW	Moderate	Moderate - Slight	Slight	Not Significant	Imperceptible
VERY LOW	Slight	Not Significant	Imperceptible	Imperceptible	Imperceptible

13.2.8 Methodology for Visual Impact Assessment

The criteria for impact assessment listed in Sections 13.2.4 to 13.2.7 were utilised for both direct and indirect effects. It is noted that every cultural heritage receptor within the study areas defined in Section 13.2.1 was not visited as the majority of these receptors are located on private land. As such, further resources were used to assess the visual impacts on setting (indirect effects). This included the Zone of Theoretical Visibility (ZTV) mapping and photowire/photomontages included in Chapter 12 of this EIAR, which were used to assess the indirect effects of the proposed turbines, which will be prominent features in the landscape.

As the proposed GCR will be buried underground, it has been screened out of the assessment of indirect effects.

13.3 EXISTING ENVIRONMENT

13.3.1 Archaeological and Historical Background

The proposed wind farm is located within the townlands of Castletown, Cornhill, Cronekill, Cloonaheen, Ballincor Demesne and Curalanty within County Tipperary. The county boundary between Offaly and Tipperary runs to the west of the site, before it turns eastwards and crosses through the northern section of the proposed wind farm. The Proposed GCR passes through a further 14 townlands (Clondallow, Dovegrove, Townparks, Woodfield or Tullynisk in County Offaly and Castletown, Caherhoereigh, Pallas, Killeen, Cronekill, Kylenamuck, Croghan, Tinnakilly, Cornhill and Ballyloughnane in County Tipperary). The Proposed TDR will require one area of accommodation works located at Sharavogue Cross roads.

The proposed wind farm site is primarily comprised of agricultural land, forestry, and peatland. There is one recorded monument within the proposed project, which comprises a tower house and associated bawn (AH 97). The site of the recorded monument is located c. 695m north-northwest of Turbine 1.

There are 109 individual or groups of recorded archaeological sites located within the 5 km study area of the proposed wind farm, including three redundant records.

There are 70 individual or groups recorded structures of architectural merit present within the study areas of the proposed project. Furthermore, 36 previously unrecorded sites of cultural



heritage significance have been identified within the study areas of the proposed project as part of this assessment.



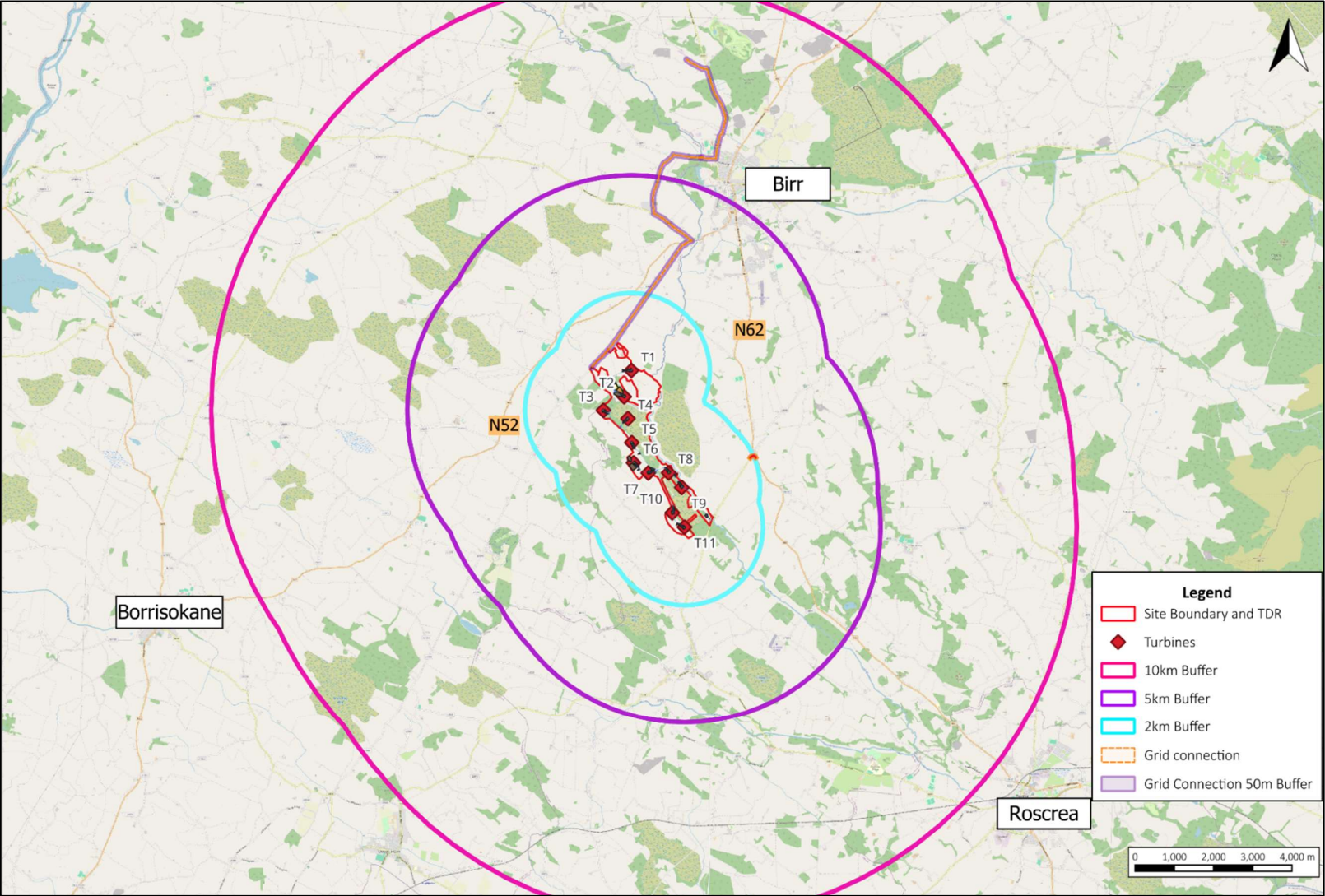


Figure 13-1: Location of Proposed Project



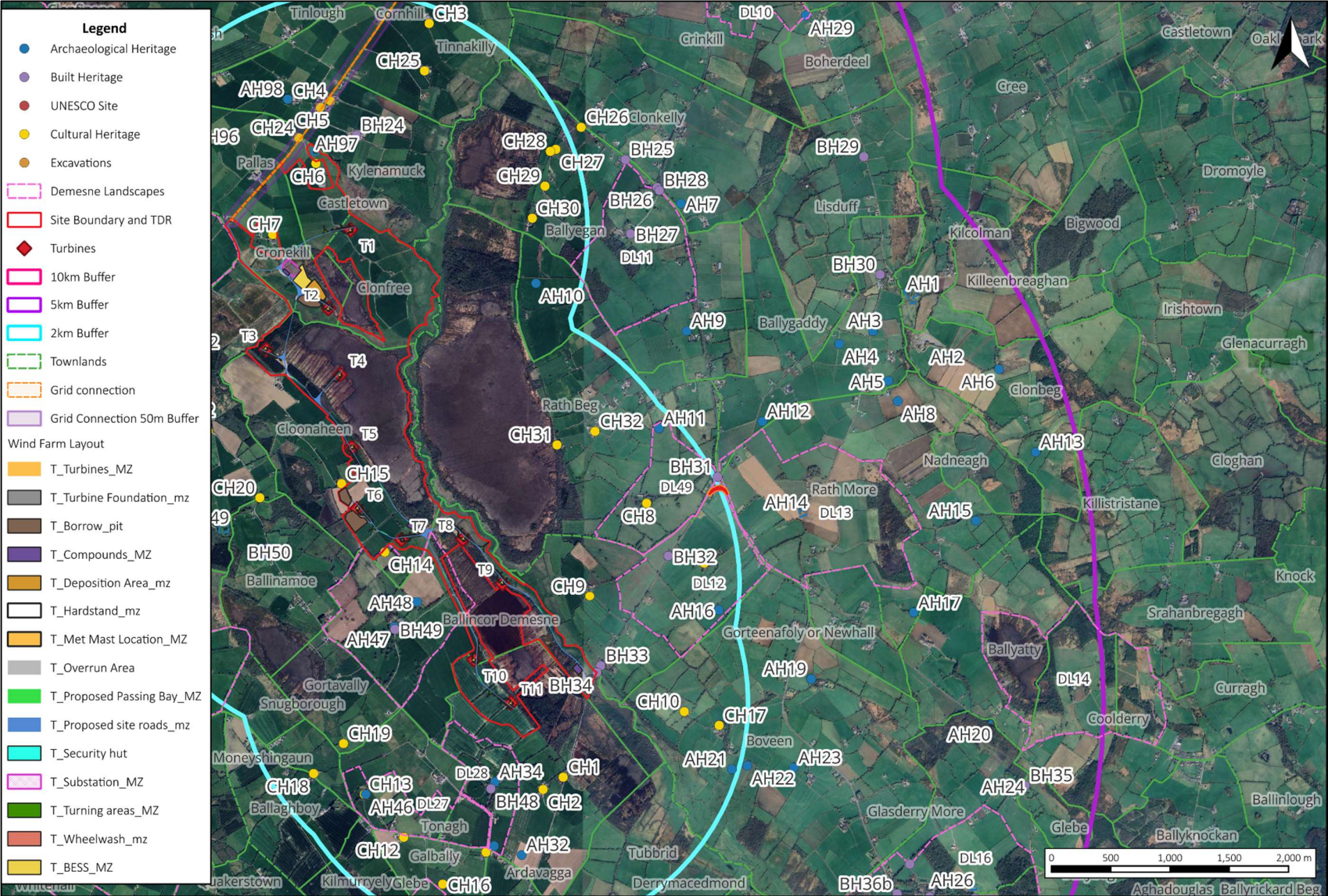


Figure 13.2b: Heritage receptors located in the eastern environs of the Proposed Project



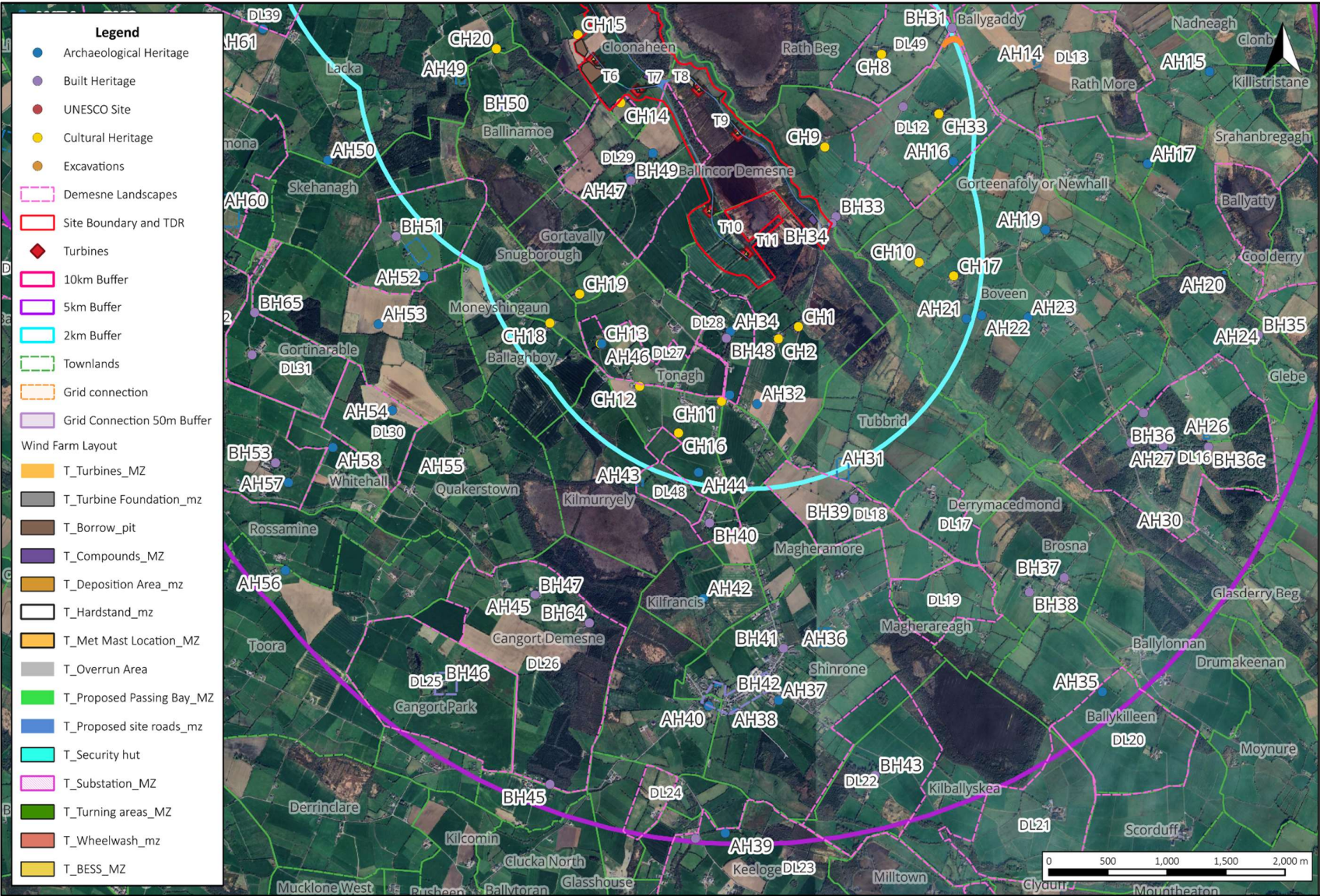


Figure 13.2c: Heritage receptors located to in the southern environs of the proposed



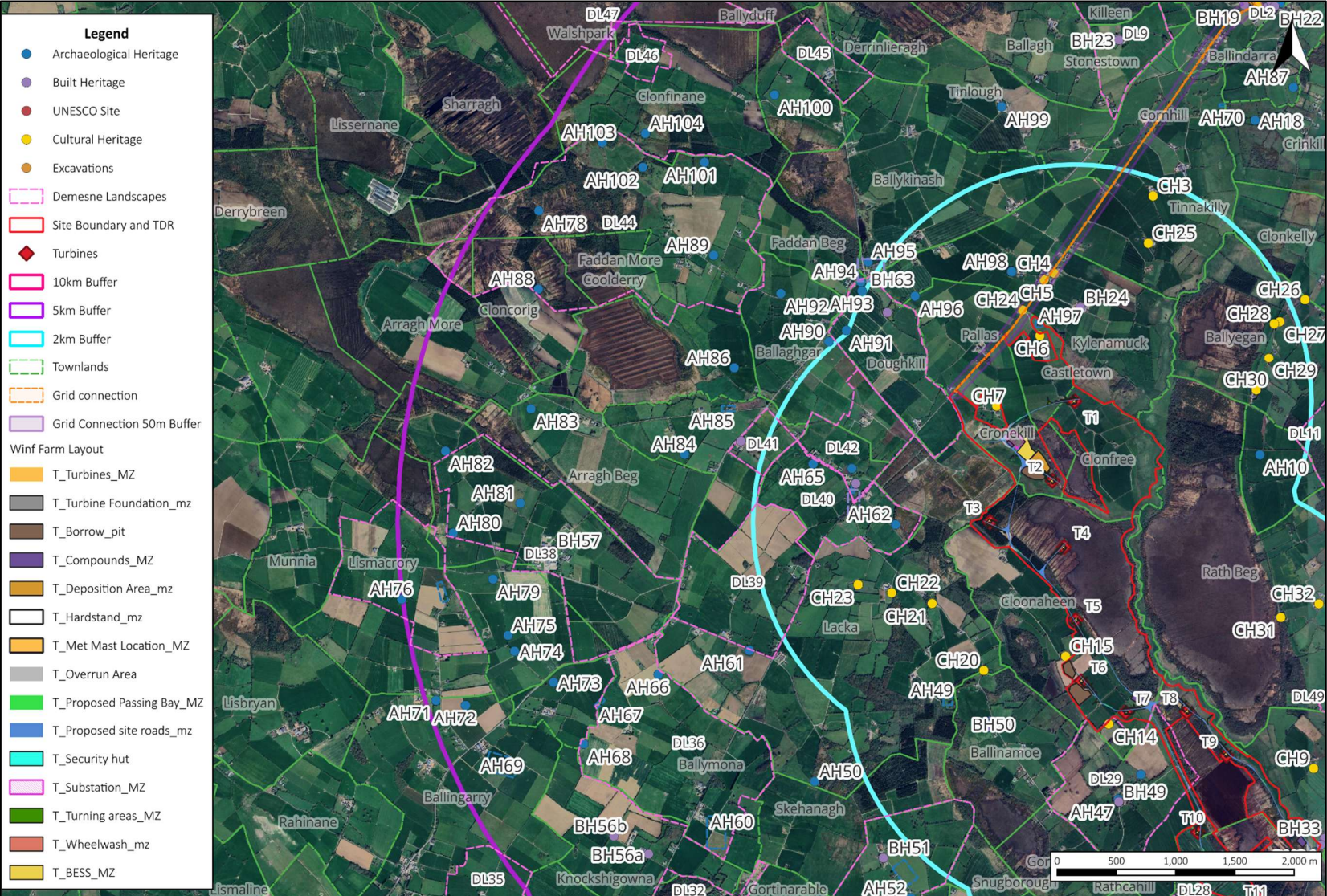


Figure 13.2d: Heritage receptors located to in the western environs of the proposed project



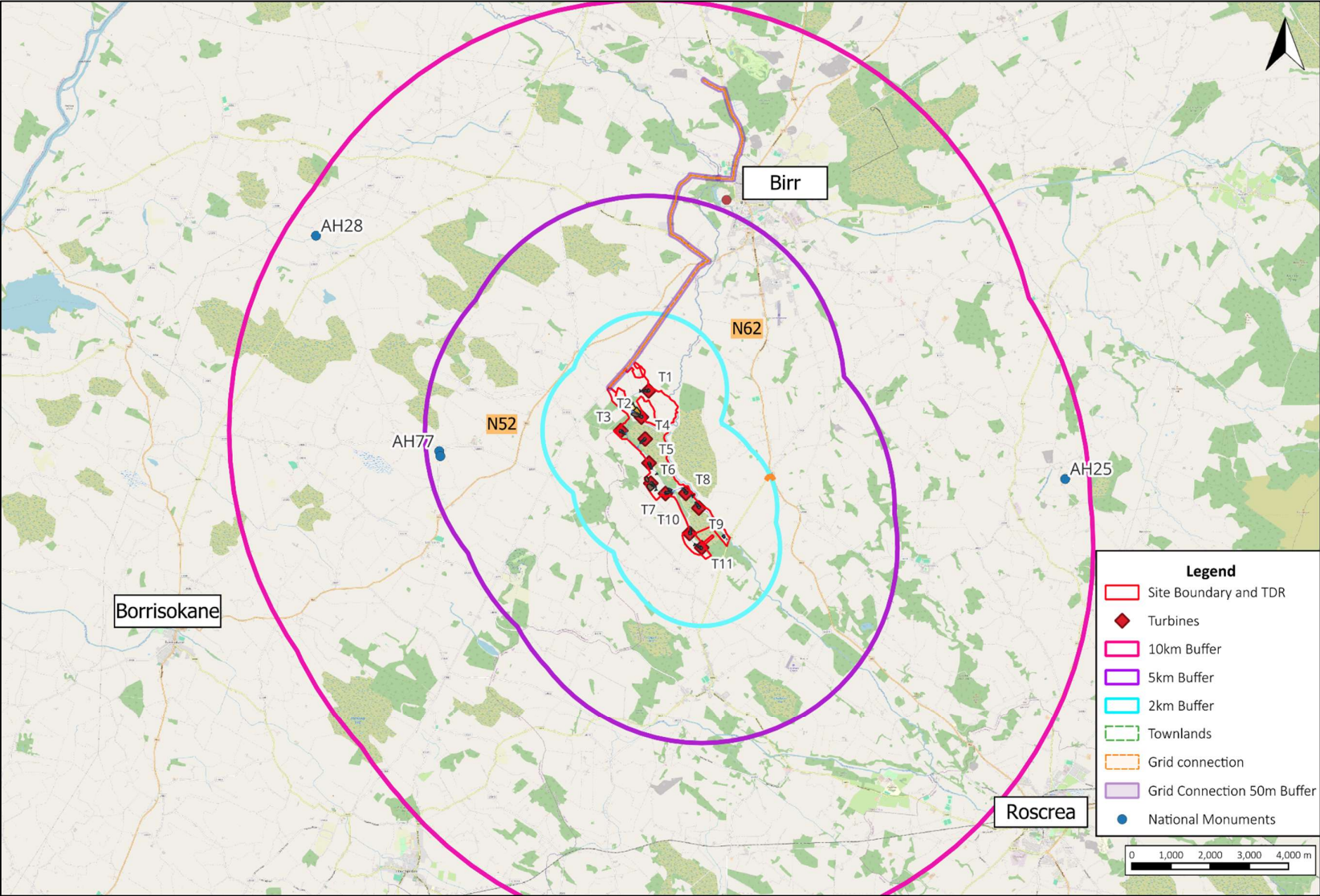


Figure 13-3: UNESCO (tentative), National Monuments and Preservation Orders within 10km of the proposed wind farm



13.3.1.1 Prehistoric Period

13.3.1.1.1 Mesolithic Period (c. 8000–4000 BC)

Recent discoveries may suggest the possibility of a human presence in the southwest of Ireland as early as the Upper Palaeolithic (Dowd and Carden 2016); however, the Mesolithic period is the earliest time for which there is clear evidence for prehistoric human colonisation of the island of Ireland. During this period people hunted, foraged and gathered food and led a primarily mobile lifestyle. The presence of Mesolithic communities is most commonly evidenced by scatters of worked flint material, a by-product of the production of flint implements.

The wider landscape may have been visited by Mesolithic communities but no evidence to substantiate Mesolithic activity within the proposed project has been discovered to date. The wider receiving environment is likely to have been visited by Mesolithic communities who utilised the Little Brosna River as a resource.

13.3.1.1.2 Neolithic Period (c. 4000–2500 BC)

During the Neolithic period communities became less mobile and their economy became based on the rearing of stock and cereal cultivation. The transition to the Neolithic was marked by major social change. Communities expanded and created more permanent settlements. This afforded the development of agriculture which demanded an altering of the physical landscape. Forests were rapidly cleared and field boundaries were constructed. Pottery was also being produced, possibly for the first time. The advent of the Neolithic period also provided the megalithic tomb tradition. There are four types of Neolithic tombs in Ireland, namely the Court Cairn, Portal tomb, Passage tomb and Wedge tomb; of which the latter style straddles the Neolithic to Bronze Age transition.

There are no recorded Neolithic sites located within the 5 km study area.

13.3.1.1.3 Bronze Age (c. 2500–800 BC)

This period is marked by the use and production of metal for the first time. As with the transition from Mesolithic to Neolithic, the transition into the early Bronze Age was accompanied by changes in society. Megalithic tombs went into decline and the tradition ended in favour of individual, subterranean cist or pit burials that occur either in isolation or in small cemeteries. These burials contained inhumed or cremated remains and were often, but not always, accompanied by a pottery vessel. Barrows are also common Bronze Age funerary monuments, typically comprising a circular enclosure surrounding the interior which is usually a low mound. This mound often contains an inhumation or cremation burial. Although some barrows such as ring-barrows have been dated from the Neolithic through to the early medieval period, they are prevalent in the Bronze Age. Two ring barrows (AH19 and AH91) are located c. 2.5km to the northeast and c. 2km northwest of the proposed wind farm. Two mound barrows (AH77) are located 4.6km west of the proposed wind farm. A bowl barrow (AH86) is located c. 2.5km northwest and a ditch barrow (AH90) is located c. 2km northwest of the proposed windfarm site.

Over 7,000 burnt mounds or *fulacht fia* sites have been recorded in the country and c. 1,500 examples excavated, making them the most common prehistoric monument in Ireland (Waddell 2022, 164). Although burnt mounds of shattered stone occur as a result of various activities that have been practiced from the Mesolithic to the present day, the Bronze Age has long been believed to have seen the peak of this activity. Dating evidence from a growing number of burnt



mounds, suggests activities resulting in burnt mounds were being carried over a span of 3,500 years in Ireland (Hawkes 2018). They are typically located in areas where there is a readily available water source, often in proximity to a river or stream or in places with a high-water table. In the field burnt mounds may be identified as charcoal-rich mounds or spreads of heat shattered stones, however, in many cases, the sites have been disturbed by later agricultural activity and are no longer visible on the field surface. Nevertheless, even disturbed spreads of burnt mound material often preserve the underlying associated features, such as troughs, pits and gullies, intact. A total of seven *fulachta fia* are recorded within the 5 km study area (AH31 and AH7), located c. 1.8km-2km south and c. 2.7km northeast of the proposed wind farm

13.3.1.1.4 Iron Age (c. 800 BC–AD 500)

There is increasing evidence for Iron Age settlement and activity in recent years as a result of development-led excavations as well as projects such as Late Iron Age and Roman Ireland (Cahill Wilson 2014). Yet this period is distinguishable from the rather rich remains of the preceding Bronze Age and subsequent early medieval period, by a relative paucity within the current archaeological record. The Iron Age in Ireland is problematic for archaeologists as few artefacts dating exclusively to this period have been found and without extensive excavation, it cannot be determined whether several monument types, such as ring-barrows or standing stones, date to the late Bronze Age or Iron Age. As noted above, two ring barrows (AH19 and 91), are recorded within the 5 km study area. It is likely that there was significant continuity in the Iron Age, with earlier monuments re-used in many cases.

13.3.1.1.5 Early Medieval Period (c. AD 500–1100)

The early medieval period is depicted in the surviving sources as an almost entirely rural based society. Territorial divisions were based on the *túath*, or petty kingdom, with Byrne (1973) estimating that there may have been at least 150 kings in Ireland at any given time. This period, with a new religious culture and evolving technologies, saw significant woodland clearance and the expansion of grassland. A new type of plough and the horizontal mill were two innovations that improved agriculture and allowed for the population to increase. Consequently, from c. AD 500 onwards, the landscape became well settled, as evidenced by the profuse distribution of ringforts, a dispersed distribution of enclosed settlements, normally associated with various grades of well-to-do farming and aristocratic classes in early medieval Ireland (Stout and Stout 1997, 20).

The ringfort or rath is considered to be the most common indicator of settlement during the early medieval period (Stout 1997). One of the most recent studies of early medieval settlement enclosures has suggested that there is potential for at least 60,000 such sites to have existed on the island (O'Sullivan et al. 2014, 49). Ringforts were often constructed to protect rural farmsteads and are usually defined as a broadly circular enclosure delineated by a bank and ditch. Ringforts can be divided into three broad categories – univallate sites, with one bank or ditch; multivallate sites with as many as four levels of enclosing features and platform or raised ringforts, where the interior of the ringfort has been built up. These enclosed sites were intimately connected to the division of land and the status of the occupant.

A large number of ringforts are located within the 5 km study area of the proposed wind farm (AH4, AH11, AH12, AH20, AH22, AH23, AH36, AH39, AH48, AH55, AH56, AH57, AH58, AH66, AH73, AH76, AH80, AH93, AH96, AH98, AH18). Many monuments recorded as enclosures represent ringforts or similar sites, which are too denuded or do not meet the standard shape and size expected of sites classified as ringforts. In addition, there three souterrains in the 5 km



study area of the proposed wind farm (AH9, AH26 and AH30). Souterrains are often associated with ringforts and consist of underground passages and chambers. These sites are usually interpreted as being used for storage and defence by early medieval groups.

The early medieval period is also marked the arrival of Christianity in Ireland, which was to have a profound impact on the country. This is evidenced by the proliferation of ecclesiastical sites throughout the country during this period. A total of six churches, or sites of churches, are recorded within the 5 km study area of the proposed wind farm, several of which may have origins in the early medieval period (AH1, AH24, AH41, AH43, AH63, and AH110). One of these church sites is associated with a ballaun stone (AH1), which may have been used as a font.

In addition, AH110, located c. 5.2 km to the northeast of the proposed wind farm, comprises two recorded holy wells. The veneration of well sites is one of the oldest traditions in Irish Christianity and most likely has its origins in pagan ritual activities. These wells can manifest themselves in a variety of forms ranging from natural springs to rain collecting rock depressions. Many holy wells can be found associated with early ecclesiastical sites and well veneration and its antecedent well worship is not confined to Ireland or even to Europe. Plummer (1910) demonstrates that at least some holy wells in Ireland were important venues of pre-Christian ritual activity.

13.3.1.1.6 Medieval Period (c. AD 1100–1600)

The piecemeal conquest by the Anglo-Normans of Ireland, which commenced in AD 1169, had a fundamental impact on the Irish landscape. Their presence was strongest in the east of the country, and it is mainly in this region that land was carved up and granted to the newly arrived lords who participated. The main success of the Anglo-Norman occupation was the welding of scattered territories into a cohesive unit through the introduction of the English form of shire government. The rural landscape became a network of manorial centres; these units would generally contain a castle (motte and bailey), a manorial house and a number of dwellings, with extensive surrounding acreage. A motte (AH109) is located 4.29 km to the north of the proposed wind farm and within 50m of the proposed GCR. During the 14th to 16th centuries, tower houses were the typical residence of the Irish gentry and are a common feature in the Irish landscape. In addition to the motte, seven recorded castles are located within the 5 km study area of the proposed wind farm (AH1, AH14, AH85, AH94, AH97, AH110 and AH107).

The prevalence of the Anglo-Normans in the 5 km study area of the proposed wind farm is exemplified by the town of Birr, located c. 5 km to the north-northeast of the proposed wind farm. A settlement was present at Birr by 1207 and there is evidence this settlement endured until c. 1315, but the lands of Birr had reverted to the O'Carrolls of Ely by the mid-1300s (SMR File). The historic town is a recorded monument (AH110) and contains a number of individual archaeological monuments, including a castle known as 'the Black Castle'. The Black Castle likely occupied the same site as an earlier Anglo-Norman motte (both were levelled in the 18th century to make way for the development of designed landscaped associated with Birr Castle).

There are six churches, or sites of churches, which are recorded within the 5 km study area of the Proposed Wind Farm site (AH1, AH24, AH41, AH43, AH63, and AH110), many of which may be medieval in date and are associated with graveyards. All six churches are associated with a graveyards (AH1, AH24, A41, AH43, AH63 and AH110).



13.3.1.1.7 Post-Medieval Period (c. AD 1600–1800)

In the mid-16th century and up until 1920, County Offaly was known as 'Kings County'. This related to the efforts of the crown to 'plant' settlers loyal to the English monarchy, where the English were struggling to maintain control of the leading local families. The resistance of the local families continued until the mid-17th century when it was finally brought under the effective control of the English (Horner 2006). In 1621, Laurance Parsons was granted lands in Birr and according to Lewis (1837), the grant listed the 'castle, fort, village and lands of Birr', indicating that the settlement of Birr was substantial at this time. Subsequently the settlement at Birr became known as Parsonstown. The castle at Birr was besieged twice in the 17th century but largely remained in the hands of the Parsons family. The Parsons family held more than 20,000 acres in the 19th century (Horner 2006).

The current Birr Castle was initially developed from a gate house to Black Castle in the early 17th century. It was subsequently developed over the next centuries until the current façade was completed in the c. 1840. The castle is located within a well-preserved demesne landscape, which contains a number of protected structures. Birr Castle is located outside of the 5 km study area for the proposed wind farm.

The Parsons family in the 19th century devoted themselves to the scientific and artistic pursuits. In the 1840s, William Parsons, third Earl of Rosse, constructed a large-scale telescope, known as the Leviathan. This enormous telescope was the largest in the world for more than 70 years and is located centrally within the demesne. The site is located c. 5.27km northeast of Turbine 1 and the site is currently listed within the tentative WHP list by UNESCO, as well as being a protected structure. A former stable block within the designed landscape has been converted into a Historic Science Centre to commemorate the contribution of the Parsons family to science.

The ending of the Williamite Wars saw the beginning of a comparative politically calm era, which allowed the country's landowners the security to experiment with the latest styles of architecture without the need to refer to defensive matters. Initially, constraints on available resources resulted in mansions of a relatively modest scale and relatively plain appearance; however, as the Irish aristocracy's sense of security grew over the following decades, their greater access to wealth helped foster a shift towards more ostentatious buildings. There are a total of 48 demesne landscapes in the 5 km study area of the proposed wind farm site. These are examples of the estates of wealthy landowners and described in Table 13.5 below.

13.3.2 SUMMARY OF PREVIOUS ARCHAEOLOGICAL FIELDWORK

A review of the Excavations Bulletin (1970–2025) has revealed that no previous archaeological investigations have taken place within the proposed project to date. One previous excavation has been carried out within 2km of the proposed wind farm. This is listed below in Table 13-5 and shown in Figures 13-2a–d within this chapter. Two investigations have taken place within 50m of the proposed GCR.



Table 13-5: Previous Archaeological Investigations

EX NO.	LOCATION	DESCRIPTION	DISTANCE FROM PROJECT
PROPOSED WIND FARM			
EX01	Faddan More	No archaeological finds or features were uncovered during archaeological monitoring. Licence No. 08E1003	c. 1.7km north-northwest
PROPOSED GRID CONNECTION ROUTE			
EX02	Townparks	Three test-trenches were mechanically excavated. No features or finds of archaeological significance were revealed. Licence No. 04E1196.	c. 50m east
EX3	Clondallow	Licence No. 24E1231 Archaeological testing was carried across a greenfield area, but nothing of archaeological significance was identified.	To the immediate northwest

13.3.3 Unesco Whip Tentative List

There are three sites inscribed onto the UNESCO World Heritage List on the island of Ireland. These comprise the Giant’s Causeway and Causeway Coast, *Brú na Bóine* and Skellig Michael, none of which lie within 10km of the proposed project.

There is one site included on the tentative list located within the 10km study area, which comprises the Birr Castle Demesne Great Telescope (The *Leviathan*, 1845, BH2). This site was added to the Tentative List in September 2025. The Great Telescope at Birr Castle Demesne along with the Dunsink Observatory, Castleknock, Dublin have been put forward as potential tentative list candidates. These observatories have played important roles in astronomical heritage stretching back as far as 1785. The justification of Outstanding Universal Value (OUV) is derived from the impact the two observatories had had on our global understanding of the Cosmos. These sites have had a lasting impact on our understanding of astronomy and without them modern observatories would not exist in their current form. The sites themselves are well maintained, with supporting domestic buildings and the original telescopes fixed within their domes or structures, which highlights OUV of the sites.

UNESCO notes that the Great Telescope or *The Leviathan* was the largest telescope in the world for over 70 years. In 1908, the Great Telescope was partly dismantled, although the supporting structure remained in situ along with the shell of the telescope, approximately 5.27km to the north of T1. The mirror with its mirror box was transferred to the Science Museum in London (where it is now on display). The tube, second mirror box, and universal joint also survive. The telescope itself was conserved and restored in the 1990s as a working



instrument. Conservation and preservation plans for the telescope are currently being prepared in partnership with all key stakeholders. The telescope is exposed to the elements and mitigation measure will be designed as part of a conservation management plan for the property. Given its location in the heart of the historic demesne, the telescope is protected from new developments in the town of Birr (<https://whc.unesco.org/en/tentativelists/6901/>).

Science galleries have been established at Birr Castle, which complement the historic nature of the demesne and research in astronomy began again at Birr Castle in 2010, with the construction of the Rosse Solar Terrestrial Observatory, and of a node of the international LOFAR radio telescope in 2017 (I-LOFAR), which are located c. 315m southwest of the Great Telescope, within the original demesne landscape associated with Birr Castle. These features are located c. 4.96km north-northeast of the closest turbine, while the substation and all other turbines are >5 km

13.3.4 Cartographic Analysis

13.3.4.1 Down Survey of the Barony of Clonliske in the County of Offaly and the Barony of Lower Ormond, in the County of Tipperary, 1657

This mapping was concerned with the identification and recording of land ownership as opposed to the accurate mapping of topographical features or towns and villages. Occasionally major features in the landscape (for example castles or churches) are shown. The map shows the area of the proposed wind farm site within the bogland.

Birr is depicted c.5 km to the northeast of the proposed wind farm. Numerous townlands within the study area can be seen on the Down Survey Mapping including 'Clonekilly', 'Cloonahill', 'Lisduff', 'Rathbeg and 'Rathmore' in County Offaly and 'Faddanmore', 'Faddanbeg', 'Gurteene', 'Lackagh' and 'Castletowne' in County Tipperary.

13.3.4.2 First Edition Ordnance Survey Map, 1838 and 1840, scale 1:10,560

Large areas of the proposed wind farm site are shown in this mapping as being marginal in character. The southern portion of the site is divided into several small pasture fields. Ballincor Demesne (DL29) is located partially within the boundary on its southwestern border. A watercourse is shown to be passing along the proposed wind farm site to the east, which correlates with townland boundaries. The county boundary between Offaly and Tipperary crosses the northern portion of the site and continues along northeastern proposed site boundary. The GCR also crosses the County boundary between Offaly and Tipperary. A small number of vernacular structures are depicted within the proposed wind farm site, and along the proposed GCR. These primarily comprise vernacular houses. One vernacular building in the northern portion of the proposed wind farm site has been assigned CH4 for the purposes of this report.

The proposed intervention on the TDR is located south of Black Bull (BH31) and is located within the northern tip of the demesne landscape associated with Sharavogue House (DL12). The oversail is located within an undeveloped field.

The landscape is depicted as predominantly rural with dispersed settlement, typically consisting of single or small groups of farmsteads. A large number of the recorded ringforts and enclosures are depicted as earthworks. Demesne Landscapes are also shown in detail. The largest settlement in the study area at this time is Birr (BH1). Birr is a large and well-established town by the time of this map. Churches, mills, a town square, distillery's, school houses, a court house,



police barracks and numerous houses can be seen along the streets of Birr. Birr Castle and associated demesne (DL1/BH2) is to the west of Birr town and comprises a large demesne with a castle, outbuildings, bridges and weirs. Shinrone another town in the 5km study area is shown in this mapping with a R.C. Chapel, Church and graveyard, a school house, brewery, post office, police barracks and a Methodist Chapel.

13.3.4.3 Ordnance Survey Map, 1902 and 1910, scale 1:2500

By the time of the 1902/1910 OS map, many of the vernacular structures have seen alterations, a large number being removed entirely from the landscape, which may reflect a lower population in the area following the famine years.

A major change in the wider landscape by the time of this map is the addition of the Great Southern and Western Railway, which pass through the 5km study area in a north–southwest direction. The train line terminates in Birr railway station (BH6). There is little change to the proposed GCR and TDR by the time of this map, with the routes following established roadways.

13.3.5 County Development Plan

13.3.5.1 Archaeology

The Offaly County Development Plan (2021–2027) and Tipperary County Development Plan (2022–2028) recognises the statutory protection afforded to all RMP sites under the National Monuments Legislation (1930–2014). The development plans list a number of aims and objectives in relation to archaeological heritage (Appendix 13-1).

There are two National Monuments located within the 10 km study area of the proposed wind farm. These comprise Lismacropy Mounds (AH77, Nat Mon No. 348), c. 4.63km to the west and Lackeen Castle (AH28, Nat Mon No. 378), c. 9.23km northwest.

There is one site that possesses a Preservation Order within the 10 km study area of the proposed wind farm. Ballycurragh Hillfort (AH25, PO No. 23/1976), c. 9.23km northwest.

There is one recorded monument within the proposed wind farm site (AH97), although the site is located over 650m from the closest turbine (T1). There are 108 individual or groups of archaeological monuments located within the 5km study area of the proposed wind farm, including three redundant records. These are listed below in Table 13-6 and shown in Figures 13-2a–d. These sites have been designated AH1-110 for the purposes of this assessment. AH109 is also located within 50m of the proposed GCR.

Please note that the AH sites recorded in Table 13-6 are listed in terms of the closest sites to the furthest sites from the proposed wind farm.

Table 13-6: Recorded Archaeological Sites within the Study Areas

AH NO.	RMP NO.	LOCATION	CLASSIFICATION	NEAREST ELEMENT	DISTANCE FROM PROPOSED PROJECT
PROPOSED GRID CONNECTION ROUTE					
AH109	TN005-021	Kileen	Castle- Motte and Bailey	GCR	To immediate east
PROPOSED WIND FARM					



AH NO.	RMP NO.	LOCATION	CLASSIFICATION	NEAREST ELEMENT	DISTANCE FROM PROPOSED PROJECT
AH48	OF038-028	Ballincor Demesne	Ringfort - Rath	T7	515m south
AH34	OF042-002	Curralanty	House - Fortified House	T11	670m north
AH97	TN008-013001/2	Castletown	Castle - Tower House; Bawn	T1	685m northwest
AH47	OF038-044	Ballincor Demesne	House - 18th/19th Century	T11	735m north
AH62	TN008-057	Loughkeen	Redundant Record	T3	785m west
AH49	TN008-041001/2	Lacka	Children Burial Ground and Ecclesiastical enclosure	T10	1.09km west
AH33	OF042-003	Curralanty	Moated Site	T11	1.15km south
AH63	TN008-058001/2	Loughkeen	Church and Graveyard	T3	1.15km west
AH98	TN005-033	Caherhoerigh	Ringfort - Rath	T1	1.16km northwest
AH32	OF042-061	Curralanty	Ballaun Stone	T11	1.27km south
AH64	TN008-012	Loughkeen	Ritual site - holy well	T3	1.23km west-northwest
AH46	OF042-001	Rathcahill	Designed Landscape Feature	T11	1.42km southwest
AH65	TN008-011	Loughkeen	Enclosure	T3	1.55km west-northwest
AH10	OF038-003	Kilnalacka	Enclosure	T1	1.61km west-northwest
AH96	TN008-055	Pallas	Ringfort - Rath	T1	1.6km northwest
AH16	OF038-029	Sharavogue	Enclosure	T9	1.84km east
AH11	OF038-014	Rath Beg	Ringfort - Rath	T8	1.88km northeast
AH44	OF042-015	Galbally	Enclosure	T11	1.89km south
AH21	OF042-054	Boveen	Enclosure	T11	1.92km east-southeast
AH31	OF042-004; OF042-4002; OF042-4003; OF042-4004; OF042-4005; OF0042-4006	Tubbird	<i>Fulacht Fia</i>	T11	1.9km south-southeast
AH91	TN008-007	Doughkill	Barrow - Ring Barrow	T3	2km northwest
AH93	TN008-006	Doughkill	Ringfort - Rath	T1	2.01km west-northwest



AH NO.	RMP NO.	LOCATION	CLASSIFICATION	NEAREST ELEMENT	DISTANCE FROM PROPOSED PROJECT
AH90	TN008-008	Ballaghar	Barrow - Ditch Barrow	T3	2.02km northwest
AH22	OF042-005	Boveen	Ringfort - Rath	T11	2.05km east-southeast
AH94	TN008-030001	Doughkill	Castle - Unclassified	T1	2.05km west-northwest
AH95	TN005-031	Ballykinash	Windmill	T1	2.09km northwest
AH43	OF042-014, 001-3	Glebe	Church, graveyard, cross, ecclesiastical enclosure	T11	2.1km southwest
AH51	TN008-051/052	Wingfield	Enclosure and redundant record	T6	2.13km southwest
AH61	TN008-063	Lacka	Large Enclosure	T3	2.29km west southwest
AH52	TN008-053	Wingfield	Enclosure	T6	2.32km southwest
AH85	TN008-01001/2	Cloraskin	Hall House and enclosure	T3	2.33km west-northwest
AH50	TN008-040	Lacka	Enclosure	T6	2.39km west-southwest
AH23	OF042-006	Boveen	Ringfort - Rath	T11	2.43km east
AH53	TN008-049	Kilcunnahin More	Moated Site	T10	2.47km west-southwest
AH86	TN008-004	Faddan More	Barrow - Bowl Barrow	T3	2.5km northwest
AH19	OF038-030	Boveen	Barrow - Ring Barrow	T11	2.53km east
AH12	OF038-015	Ballygaddy	Ringfort - unclassified	T9	2.54km northeast
AH99	TN005-032	Tinlough	House - Indeterminate Date	T1	2.55km north
AH9	OF038-04001/2	Ballyegan	Souterrain and enclosure	T8	2.55km northeast
AH84	TN008-009	Cloraskin	Enclosure	T3	2.58km west
AH92	TN008-005	Ballaghar	Enclosure	T3	2.6km northwest
AH14	OF038-16001-3	Rath More	Tower House and bawn	T9	2.65km east-northeast
AH70	TN005-036001/2	Tinnakilly	Ford and burial	T1	2.77km northeast
AH7	OF038-043	Clonkelly	Fulacht Fia	T1	2.79km east
AH18	OF035-020	Crinkill	Enclosure	T1	2.81km northeast
AH42	OF042-060	Kilfrancis	Earthwork	T11	2.93km south
AH66	TN008-037	Ballymona	Ringfort	T3	3.03km west-southwest



AH NO.	RMP NO.	LOCATION	CLASSIFICATION	NEAREST ELEMENT	DISTANCE FROM PROPOSED PROJECT
AH55	TN011-110001-3	Quakerstown	Ringfort, meeting house and burial ground	T10	3.08km southwest
AH54	TN008-064	Springpark	Enclosure	T10	3.15km southwest
AH89	TN008-029	Faddan More	Designed Landscape - Tree Ring	T3	3.2km northwest
AH87	OF035-024	Ballindarra	Enclosure	T1	3.22km northeast
AH60	TN008-038/039	Ballymona	Two enclosures	T6	3.24km west-southwest
AH36	OF042-016/017	Shinrone	Enclosure and ringfort	T11	3.28km south
AH45	OF042-013	Cangort Demesne	Castle	T11	3.38km southwest
AH17	OF038-031	Rath More	Enclosure	T11	3.43km east-northeast
AH4	OF038-005	Ballygaddy	Ringfort	T9	3.48km northeast
AH105	OF035-023	Ballindarra	Enclosure	T1	3.5km northeast
AH67	TN008-036001/2	Ballymona	Two enclosures	T3	3.59km west-southwest
AH100	TN005-024	Clonraskin	Enclosure	T1	3.62km northwest
AH41	OF042-026001/2	Shinrone	Church and graveyard	T11	3.65km south
AH8	OF038-018	Rathmore	Enclosure	T9	3.66km northeast
AH5	OF038-017	Ballygaddy	Cairn	T9	3.66km east-northeast
AH101	TN005-028	Faddan More	Redundant Record	T1	3.7km northwest
AH58	TN011-009	Whitehall	Ringfort	T10	3.73km southwest
AH106	OF035-069/ TN005-035	Ballyloughnane	Bridge	T1	3.73km northeast
AH3	OF038-006	Ballygaddy	Enclosure	T9	3.76km northeast
AH37	OF042-027	Shinrone	Redundant Record	T11	3.78km south
AH107	OF035-021/001	Ballindara	Tower house and bawn	T1	3.78km northeast
AH40	OF042-024	Cloghmoyle	Designed Landscape - Folly	T11	3.83km south
AH38	OF042-025001/2	Shinrone	Castle and bawn	T11	3.84km south
AH27	OF042-047	Glasderry More	House - 16th/17th century	T11	3.89km southeast



AH NO.	RMP NO.	LOCATION	CLASSIFICATION	NEAREST ELEMENT	DISTANCE FROM PROPOSED PROJECT
AH59	TN008-048	Knockshigowna	-Summer House	T6	3.89km southwest
AH73	TN008-029	Garrane	Ringfort	T3	3.89km west-southwest
AH68	TN008-035	Ballymona	Enclosure	T6	3.91km southwest
AH81	TN008-017	Gurteen	Enclosure	T3	3.95km west
AH83	TN008-003	Arragh Beg	Enclosure	T3	3.97km west-northwest
AH20	OF038-032001/2	Glasderry More	Ringfort and redundant record	T11	4km east
AH15	OF038-022	Rath More	Enclosure	T9	4.01km east-northeast
AH102	TN005-0027	Faddan More	Designed Landscape - Tree Ring	T1	4.13km northwest
AH30	OF042-018001/2	Glasderry More	Enclosure and souterrain	T11	4.14km southeast
AH74	TN008-025	Gurteen	Enclosure	T3	4.14km west-southwest
AH75	TN008-074	Gurteen	Enclosure	T3	4.16km west-southwest
AH26	OF042-008001/2	Glasderry More	Enclosure and souterrain	T11	4.17km southeast
AH2	OF038-019001/2	Clonbeg	Castle and bawn	T9	4.17km east-northeast
AH1	OF038-007 OF038-007001 OF038-007002 OF038-007003 OF038-007004 OF038-007005 OF038-007007	Kilcolman	Ecclesiastical enclosure Holy well Church Graveyard Bullaun stone	T9	4.18km northeast
AH29	OF035-001	Crinkill	Ringfort	T1	4.21km northeast
AH57	TN011-008	Kilcunnahin Beg	Ringfort	T10	4.21km southwest
AH79	TN008-023	Gurteen	Enclosure	T3	4.21km west
AH104	TN005-034	Clonfinane	Designed Landscape - Tree Ring	T1	4.26km northwest
AH88	TN008-002	Cloncorrig	Well	T3	4.27km northwest
AH109	TN005-021 PO No. 23/1976	Kileen	Castle- Motte and Bailey	T1	4.29km north
AH24	OF042-003001/2	Glebe	Church and graveyard	T11	4.37km east
AH108	TN005-020	Kileen	Earthwork	T1	4.46km north



AH NO.	RMP NO.	LOCATION	CLASSIFICATION	NEAREST ELEMENT	DISTANCE FROM PROPOSED PROJECT
AH80	TN008-016	Gurteen	Ringfort	T3	4.52km west
AH69	TN008-031/032/033	Ballingarry	Three enclosures	T3	4.53km southwest
AH6	OF038-020	Clonbeg	Enclosure	T9	4.54km northeast
AH103	TN005-026	Faddan More	Earthwork	T3	4.56km northwest
AH82	TN008-056	Gurteen	Enclosure	T3	4.61km west
AH78	TN005-025	Faddan More	Enclosure	T3	4.61km northwest
AH13	OF038-021	Clonbeg	House - 16th/17th century	T9	4.62km east-northeast
AH77	TN008-022 Nat. Mon. 348	Lismacropy	Two Mound Barrows	T3	4.63km west
AH72	TN008-028	Ballingarry	Moated Site	T3	4.67km west-southwest
AH56	OF041-002	Torra	Ringfort	T10	4.69km southwest
AH35	OF042-055	Ballykilleen	Enclosure	T11	4.77km southeast
AH39	OF042-028	Keeloge	Ringfort	T11	4.86km south
AH71	TN008-027	Ballingarry	Moated Site	T3	4.89km west-southwest
AH110	OF035-012 OF035-012004 OF035-012006 OF035-012008 OF035-012009 OF035-012010 OF035-012014 OF035-012020 OF035-012001 OF035-012002 OF035-012003 OF035-012005 OF035-012007 OF035-012011 OF035-012012 OF035-012015 OF035-012017 OF035-012018	Townparks	Historic Town Castle Bridge Sheela-na-gig Castle, motte Fortified house Bridge Redundant record Church Graveyard Ecclesiastical site Holy well Town defences Mill Prison Market cross Mill Market House	T1	4.92 km northeast
AH76	TN008-020	Lismacropy	Ringfort	T3	4.95km west
AH28	TN004-022001 Nat. Mon. 378	Abbeville	Lackeen Castle	T3	9.23km northwest
AH25	OF039-037 PO No. 23/1976	Ballycurragh, Glebe	Hillfort	T9	9.26km east



13.3.5.2 Record of Protected Structures

The Offaly County Development Plan (2021-2027) and Tipperary County Development Plan (2022-2028) recognises the value of the built heritage to the county and is committed to the protection and enhancement of this heritage by providing measures for the protection of architectural heritage (Appendix 13-2). These include the establishment of a Record of Protected Structures (RPS) and the designation of Architectural Conservation Areas (ACAs).

There are 71 individual or groups of protected structures within the study areas of the proposed project. These are listed below in Table 13-7 and shown in Figures 13-2a-d.

Please note that the sites recorded in Table 13-7 are listed in terms of the closest sites to the furthest sites from the proposed project.

Table 13-7: Recorded Architectural Heritage Sites within the Study Areas

BH NO	RPS/ NIAH NO	DESCRIPTION	LOCATION	NEAREST ELEMENT	DISTANCE FROM PROPOSED PROJECT
PROPOSED GRID CONNECTION ROUTE					
BH18	S336/ 22400514	Bridge	Ballyloughnane	GCR	To the immediate northwest
BH19	S53/ 22400515	Castle View House	Ballyloughnane	GCR	35m north
BH54	S518	The Shell Wel	Croghan	GCR	25m south
BH67	S517	Croghan House	Croghan	GCR	22m south
BH68	S519/ 22400527	Croghan Bridge	Croghan/ Townparks	GCR	To the immediate south
BH61	49-312/ 14819282	Post box	Townparks	GCR	15m south
BH70	49-313-320/ 14819283-290	Terrace eight houses	Townparks	GCR	To the immediate west
BH69	49-08/ 14935013	Tullynisk Gate Lodge	Woodfield or Tullynisk	GCR	8m east
PROPOSED WIND FARM					
BH49	56-03/ 14938019	Ballincor House	Ballincor Demesne	T10	705m west-northwest
BH48	57-05/ 14942001	Corolanty House	Curralanty	T11	720m south
BH34	57-04/ 14938021	Sharavogue Bridge	Ballincor Demesne	T11	765m east-northeast
BH50	56-01/ 14938016; 56-02/ 14938017	Farm house Ballincor National School	Ballinamoe	T6	790m southwest



BH NO	RPS/ NIAH NO	DESCRIPTION	LOCATION	NEAREST ELEMENT	DISTANCE FROM PROPOSED PROJECT
BH24	S232	Castletown House	Kylenamuck	T1	805m north
BH33	57-03/ 14938010	Bridge	Sharavogue	T11	1.06km east
BH58	S270/ 22400804; S271/ 22400803	Loughkeen House; Loughkeen Church	Loughkeen	T3	1.11km west
BH59	S545/ 22400802	Ivy Hall House	Loughkeen	T3	1.16km west- northwest
BH32	57-02/ 14938008	Sharavogue House gate lodge	Sharavogue	T9	1.4km east- northeast
BH62	S444/ 22400801	Carrig House	Doughkill	T1	1.74km northwest
BH63	S447/ 22400524; S445/ 22400520; S446/ 22400521; S526; S526	Catholic Church of the Annunciation; Wind Mill; Kiln; Ballykinash House; Ballykinash Post Box	Caherhoereigh; Ballykinash	T1	1.96km northwest
BH31	57-01/ 14938007	Black Bull house	Rath Beg	T9	2km northeast
BH60	S121	Oak Park house	Clohaskin	T3	2.19km west- northwest
BH51	S550/ 22400813	Wingfield House (demolished)	Wingfield	T6	2.23km southwest
BH39	57-07/ 14942009	Clareen County House	Clareen	T11	2.26km southeast
BH40	57-06/ 14942002	Belfield House	Kilmurryely	T11	2.3km south
BH27	14938012	Ballyeighan House	Ballyegan	T1	2.33km east
BH25	53-20/ 14938015	House	Ballyegan	T1	2.38km east- northeast
BH26	53-19/ 14938014	Ballyeighan Gate Lodge	Ballyegan	T1	2.61km east- northeast
BH28	53- 18/14938013	Post Box	Ballyegan	T1	2.62km east- northeast
BH23	S370/ 22400513	Baronne Court	Stonestown	T1	3.06km north
BH41	61-01/ 14822001	Saint Mary's Catholic Church	Shinrone	T11	3.35km south



BH NO	RPS/ NIAH NO	DESCRIPTION	LOCATION	NEAREST ELEMENT	DISTANCE FROM PROPOSED PROJECT
BH47	56-04/ 14942022	Cangort House	Cangort Demesne	T11	3.39km south-southwest
BH64	56-05/ 14942023	Cangort House Gate Lodge	Cangort Demesne	T11	3.4km south-southwest
BH18	S336/ 22400514	Bridge	Ballyloughnane	T1	3.5km north-northeast
BH65	S181/ 22400821	Fairyhill House - Well	Gortinangle	T6	3.58km southwest
BH19	S53/ 22400515	Castle View House	Ballyloughnane	T1	3.6km north-northeast
BH36a	57-10/ 14942013	Gloster House - Gate Lodge	Glasderry More	T11	3.63km southeast
BH36b	57-11/ 14942014	Gloster House - Gate Lodge	Glasderry More	T11	3.63km southeast
BH20	S521/ 22400516	Terraced Houses	Ballyloughnane	T1	3.67km north-northeast
BH57	S186	Gurteen House	Gurteen	T3	3.68km west
BH42	61-45; 61-37; 61-39; 61-40; 61-41; 61-42; 61-43; 61-44; 61-11/ 14822012; 61-11/ 14822011; 61-02/ 14822002; 61-03/ 14822003; 61-09/ 14822010; 61-08/ 14822009; 61-35; 61-36; 61-04 14822004;	Roscrea Road House; Corner Main Street; Main Street Terrace; 112 Main Street; Main Street Terrace; 107 Main Street; Main Street Terrace; Main Street Terrace; House; House; House; E. Guest Shop; Cloghmoyle Parochial School; House; Saint Mary's House; Shinrone House;	Shinrone	T11	3.71km south



BH NO	RPS/ NIAH NO	DESCRIPTION	LOCATION	NEAREST ELEMENT	DISTANCE FROM PROPOSED PROJECT
	61-05/ 14822005; 61-07/ 14822007; 61-06/ 14822006	Annebrook House; Bridge; Cloghmoyle Castle;			
BH22	S552/ 22400518	Bridge	Ballyloughnane	T1	3.73km north- northeast
BH38	57-09/ 14942011	John's Ville House	Brosna	T11	3.73km southeast
BH21	S335/ 22400517	Riverstown House	Ballyloughnane	T1	3.74km north- northeast
BH52	S549/ 22400820	Fairyhill House	Gortinangle	T6	3.81km southwest
BH37	57-08/ 14942010	Brosna House	Brosna	T11	3.83km southeast
BH36	57-12/ 14942015	Gloster House	Glasderry More	T11	3.87km southeast
BH56a	S251	Lisnagower Cottage	Lisnagower	T6	3.92km west- southwest
BH30	53-15	Saint Colmans Church of Ireland Church	Kilcolman	T9	4.11km northeast
BH56b	S252	Lisnagower Cottage	Lisnagower	T6	4.14km west- southwest
BH36c	57-13/ 14942016	Gloster House – Folly	Glasderry More	T11	4.24km southeast
BH53	22401105	Clifton House	Kilcunnahin Beg	T10	4.24km southwest
BH5	53-363/ 14820002	High Park House	Drumbane	T1	4.34km northeast
BH29	53-16/ 14938005	Lisduff Cottage	Lisduff (Cl. By.)	T1	4.36km east- northeast
BH13	53-02/ 14820013; 53-03/ 14820014; 53-06/ 14820015; 53-05/ 14820016; 53-06/ 14820018	Water Pump; House; Water Pump; House; Water Pump	Crinkill	T1	4.41km northeast
BH12	53-01/ 14820012	Birr Barracks	Crinkill	T1	4.44km northeast



BH NO	RPS/ NIAH NO	DESCRIPTION	LOCATION	NEAREST ELEMENT	DISTANCE FROM PROPOSED PROJECT
BH46	60-01/ 14941001; 60-02/ 14941002; 60-03/ 14941003	Cangort Park County House Cangort Park Barn Cangort Park Stables	Cangort Park	T11	4.4km southwest
BH6	53-364/ 14820003; 53-365/ 14820004	Birr Railway Station; Birr Railway Station goods shed	Drumbane	T1	4.46km northeast
BH14	5307/ 14820019	Hillbrook	Crinkill	T1	4.47km northeast
BH55	S230	House	Knockshigowna	T6	4.5km southwest
BH16	53-372/ 14820021	Stada Cona House	Seefin	T1	4.51km northeast
BH35	57-14/ 14942017	Saint Mark's Church (Ettagh)	Glebe (Cl. By.) Ettagh Ed	T11	4.53km south- southeast
BH43	61-12/ 14822013	Kilballyskea House	Kilballyskea	T11	4.53km south- southeast
BH7	53-366/ 14820005	Drumbane House	Drumbane	T1	4.57km northeast
BH15	53-371/ 14820020	Millbrook House	Clonoghil Upper, Crinkill	T1	4.58km northeast
BH8	53-367/ 14820006	Seefin House	Seefin	T1	4.64km northeast
BH4	53-362/ 14820001	Post Box	Seefin	T1	4.66km northeast
BH9	53-368/ 14820009	Hillside House	Seefin	T1	4.73km northeast
BH10	53-369/ 14820010	Ard na Gréine	Seefin	T1	4.73km northeast
BH17	53-09/ 14820023	Beech Park House	Crinkill	T1	4.74km northeast
BH1	53-215/ 14819110; 53-216/ 14819111; 14819112; 14819113; 53-219/ 14819114; 53-220/ 14819115; 53-221/	Bridge Post box House House Public House Chimney The Monastery Water pump National School	Townparks	T1	4.75km northeast



BH NO	RPS/ NIAH NO	DESCRIPTION	LOCATION	NEAREST ELEMENT	DISTANCE FROM PROPOSED PROJECT
	14819116; 53-222/ 14819117; 53-223/ 14819118				
BH45	14942003	House	Cangort Demesne	T11	4.77km south-southwest
BH11	53-370/ 14820011	Williamsbrook House	Clonoghil Upper, Seefin	T1	4.83km northeast
BH2	53-350/ 14819259	Birr Castle – Stables	Townparks	T1	4.83km north-northeast
BH44	61-14/ 14942006	Water Mill	Keeloge (Cl. By.)	T11	4.95km south
BH66	53-361/ 14819292	Ice House	Clonoghil Lower	T1	5km northeast
BH3	53-360/ 14819293	Country House Hotel	Townparks	T1	5km northeast

13.3.5.3 Architectural Conservation Area

Architectural Conservation Areas (ACA) comprise a place, an area, or group of structures or part of a townscape, which is of special architectural, historical, archaeological, artistic, cultural, scientific, social or technical interest or contributes to the appreciation of protected structures; and which is listed as such an area in the County Development Plan. It may or may not include protected structures. An ACA may consist for example, of a terrace of houses, a street, town centre or a cluster of structures associated with a specific building such as a mill or country house. Unless a structure is also included on the Record of Protected Structures, the protected status afforded from inclusion in an ACA only applies to the exterior and streetscape.

There are no designated ACAs located within the 5 km study area of the proposed wind farm.

13.3.6 National Inventory of Architectural Heritage

13.3.6.1 NIAH Building Survey

The National Inventory of Architectural Heritage (NIAH) survey of County Offaly and County Tipperary was carried out in 2004. A review of the architectural survey was undertaken as part of this assessment. A total of 65 individual or groups of structures were identified within the study areas for the proposed project. The majority of these are listed within the RPS as shown in Table 13-7 (Figures 13-2a–d). Three of the structures are listed in the NIAH only (BH27, 45, 53).

13.3.6.2 NIAH Garden Survey

The first edition Ordnance Survey maps of County Offaly (1838) and County Tipperary (1840) shows the extent of demesne landscapes as shaded portions of land within the study areas surrounding the proposed project. These were established as a naturalised landscaped setting



for the large houses of the landed gentry. The landscapes are also marked on the later early 20th century mapping, although they are not shown as shaded portions of land in these maps.

There are 53 designed landscapes shown on the first edition OS map of 1838 and 1840 within the study areas of the proposed project, including 33 gardens recorded within the NIAH Garden Survey. These designed landscapes have been assigned DL reference numbers for the purposes of this assessment. These are listed below in Table 13-8 and shown in Figures 13-2a-d.

Table 13-8: Designed landscapes within the study areas

DL NO.	NIAH SURVEY NO	NAME	TOWNLAND	NEAREST ELEMENT	DISTANCE FROM PROPOSED PROJECT
PROPOSED GRID CONNECTION ROUTE					
DL43	-	Carrig Demesne	Doughkill	GCR	To the immediate east
DL2	-	Riverstone House Demesne	Ballyloughnane, Killeen	GCR	To the immediate northeast
DL1	81	Birr Castle Demesne	Townparks	GCR	To the immediate south
DL51	83	Chesterfield House demesne	Dovegrove	GCR	To the immediate east
DL52	82	Woodfield House demesne	Woodfield or Tullynisk	GCR	0m
DL53	79	Dovegrove House demesne	Dovegrove	GCR	To the immediate west
PROPOSED TURBINE DELIVERY ROUTE					
DL12	5494	Sharavogue Demesne	Sharavogue	TDR	0m
PROPOSED WIND FARM					
DL29	5422	Ballincor Demesne	Ballincor Demesne	Access roads, T7	0m (access roads), T7 103m northeast
DL28	-	Corolanty Demesne	Curralanty	T11	355m south
DL40	-	Glebe Demesne	Loughkeen	T3	580m east
DL43	-	Carrig Demesne	Doughkill	T3	700m southeast
DL27	5488	Rathcahill Demesne	Rathcahill	T11	865m southwest
DL49	5491	Raymount Demesne	Kilcolman	T9	875m east-northeast
DL42	748	Ivy Hall Demesne	Loughkeen	T3	960m west-northwest
DL12	5494	Sharavogue Demesne	Sharavogue	T9	975m east
DL50	750	Wingfield Demesne	Wingfield	T6	1.38km southwest
DL 39	-	Lacka House Demesne	Lacka	T3	1.5km west
DL48	-	Glebe House Demesne	Glebe	T11	1.62km south-southwest
DL41	746	Oak Park Demesne	Cloraskin	T3	1.74km west-northwest



DL NO.	NIAH SURVEY NO	NAME	TOWNLAND	NEAREST ELEMENT	DISTANCE FROM PROPOSED PROJECT
DL18	5440	Clareen Demesne	Clareen	T11	1.77km south-southeast
DL11	-	Ballyeighan Demesne	Ballyegan	T1	1.87km east
DL13	-	Rathmore Demesne	Rath More	T9	2.04km east
DL15	5430	Bellefield House Demesne	Kilmurryely	T11	2.09km south
DL9	-	Tinnakilly House Demesne	Corraduff, Stonestown	T1	2.4km north
DL17	5449	Derry House Demesne	Derrymacedmond	T11	2.4km southeast
DL36	743	Ballymona House Demesne	Ballymona	T3	2.63km southwest
DL38	742	Gurteen College	Gurteen	T3	2.65km west-southwest
DL44	-	Faddan More Demesne	Faddan More, Coolderry, Cloncorrig	T3	2.75km northwest
DL19	5474	Leipsic Demesne	Magherareagh	T11	3.02km south
DL31	745	Fairyhill House Demesne	Gortinable	T6	3.06km west
DL30	749	Spring Park Demesne	Springpark	T10	3.1km southwest
DL26	5436/5437	Cangort House Demesne	Cangort Demesne	T11	3.14km southwest
DL16	5463	Gloster House Demesne	Glasderry More	T11	3.18km southeast
DL45	-	Elm Hall Demesne	Derryinliereragh	T1	3.19km northwest
DL32	-	Fairy Mount Demesne	Knockshigowna	T6	3.44km southwest
DL10	5431	Birr View Demesne	Crinkill	T1	3.5km northeast
DL2	-	Riverstone House Demesne	Ballyloughnane, Killeen	T1	3.68km north-northeast
DL22	5468	Killballyskea House Demesne	Killballyskea	T11	c. 3.78km south-southeast
DL34	747	Clifton House Demesne	Kilcunnahin Beg	T10	3.87km southwest
DL14	5446	Coolderry House Demesne	Coolderry, Ballyatty	T11	4.03km east-northeast
DL5	-	High Park Demesne	Drumbane	T1	4.06km northeast
DL47	-	Walshpark House Demesne	Walshpark	T1	4.06km northwest
DL8	-	Rosse Villa Demesne	Crinkill	Offaly	4.09km northeast
DL25	5438	Cangort Park Demesne	Cangort Park	T11	4.09km southwest
DL37	740	Lismacropy House Demesne	Lismacropy	T3	c. 4.38km west-southwest



DL NO.	NIAH SURVEY NO	NAME	TOWNLAND	NEAREST ELEMENT	DISTANCE FROM PROPOSED PROJECT
DL24	-	Woodbrook House Demesne	Gortcreen	T11	4.41km south
DL4	-	Prospect Demesne	Drumbane	T1	4.42km northeast
DL33	-	Knockshigowna House Demesne	Knockshigowna	T6	4.43km southwest
DL46	-	Clonfinane House Demesne	Clonfinane	T1	4.45km northwest
DL1	81	Birr Castle Demesne	Townparks	T1	4.45km north-northeast
DL7	-	Whiteford House Demesne	Crinkill	T1	4.51km northeast
DL6	-	Willambrook Demesne	Seefin	T1	4.54km northeast
DL23	5477	Milltown Demesne	Milltown, Keeloge	T11	4.6km south
DL20	5421	Annaville Demesne	Ballykilleen	T11	4.74km southeast
DL3	-	Moor Park Demesne	Townparks	T1	4.84km northeast
DL35	741	Ballingarry House Demesne	Ballingarry	T6	4.9km west-southwest
DL21	5496	Woodville Demesne	Killballyskea	T11	4.93km southeast

13.3.7 Topographical files of the National Museum of Ireland

Information on stray archaeological finds from the study area in County Offaly and Tipperary has been recorded by the National Museum of Ireland since the late 18th century. Location information relating to these finds is important in establishing prehistoric and historic activity in the study area.

The recorded stray archaeological finds from within study areas of the proposed wind farm site, TDR and GCR are detailed below in Table 13-9.

Table 13-9: Stray finds recorded by the National Museum of Ireland

NMI REF.	FIND	TOWNLAND
1995:1612-1619	Lead bullets	Crinkill
1995:1920-1621	Metal rim of bullet cartridges	
1995:910	Copper alloy token	
1995:911-912	Copper alloy buckles	
1995:913-926	Lead bullets	
2002_15	Polished stone axehead	Tubbrid
1977:1213	Iron socketed spearhead	Boveen
1960:602	Copper alloy weight box	Ballygaddy
1960:603-605	3 copper alloy weights	



NMI REF.	FIND	TOWNLAND
2002:62	Wooden plank fragments	Faddan More
1999_34	Leather satchel	
2002_53	Wooden vessel	

13.3.8 Aerial Photographic & LIDAR Analysis

Inspection of the aerial photographic coverage of the proposed wind farm site, TDR and GCR held by Tailte Éireann (1995–2013), Google Earth (2015–2025), and Bing Maps (2023) and the Open Topographical Data Viewer (LiDAR) has been carried out as part of this assessment.

The proposed wind farm is not covered by the available LiDAR coverage. The proposed wind farm occupies a mixture of pasture and arable lands, with four of the turbines located on the edge of bogland. A large portion of the bogland is intact, although Turbine 4 is located within turbary plots. No previously unrecorded sites of archaeological potential were noted in the aerial coverage.

13.3.9 Cultural Heritage

Cultural heritage assets can incorporate both archaeological and built heritage remains, which do not have statutory protection or which have not been previously recorded as heritage assets in any known datasets. Cultural heritage can also incorporate more ephemeral and intangible aspects of the heritage environment, including folklore. A number of sources were reviewed in order to identify cultural heritage assets within the 2 km study area of the proposed wind farm site and the 50 m study area of the proposed GCR and TDR. These included the historic Ordnance Survey mapping, aerial photographic coverage and field inspection.

A total of 36 cultural heritage sites have been identified within the study areas of the proposed project. These are listed below in Table 13-10 and shown in Figures 13-2a-d.

Please note that the CH sites recorded in Table 13-10 are listed in terms of the closest sites to the furthest sites from the proposed wind farm.

Table 13-10: Cultural Heritage Sites within the Study Areas

CH NO	TOWNLAND	DESCRIPTION	NEAREST ELEMENT	DISTANCE FROM PROPOSED PROJECT
PROPOSED GRID CONNECTION ROUTE				
CH24	Pallas	Renovated single storey cottage, with yellow brick reveals around the windows. The structure has been extended to the north.	GCR	5m northwest
CH5	Caherhoereigh	Single storey vernacular structure now in use as a cottage and marked on the 1910 OS map. Formerly part of a large rectangular yard, the eastern wall of which remains extant.	GCR	To the immediate northwest
CH4	Kylenamuck	A house and outbuilding are marked here on all the historic maps. Today a single storey vernacular house remains here, with dormer roof and masonry outbuildings.	GCR	20m southeast



CH NO	TOWNLAND	DESCRIPTION	NEAREST ELEMENT	DISTANCE FROM PROPOSED PROJECT
CH35	Ballyloughnane	Terrace of two storey vernacular houses marked on the historic OS map editions. In good condition.	GCR	To the immediate east
CH36	Killeen	Killeen Farm. Farm house marked on the 1910 OS map. Extant today as a two storey building located within a more modern farmyard.	GCR	32m east
PROPOSED TURBINE DELIVERY ROUTE				
CH34	Rath Beg	Single storey vernacular cottage marked on all OS map editions. In good condition.	TDR	42m north
PROPOSED WIND FARM				
CH14	Cloonaheen	A group of three buildings are depicted on the 1838 OS map. Aerial imagery depicts abandoned vernacular buildings	T7	165m southwest
CH15	Cloonaheen	Ruined vernacular house and outbuildings depicted on the 1838 OS map. Modern agricultural structures have been added.	T6	225m north-northeast
CH6	Castletown	Cleary's Well is depicted on the 1838 OS map and also on the 1910 OS map. It is not visible on aerial imagery and not present today.	T1	625m northwest
CH7	Cronekill	A farmstead comprising four buildings depicted on the 1838 OS map. Derelict vernacular cottage and outbuildings remain today along with modern structures.	T1	645m west
CH9	Sharavogue	A farmstead comprising a number of buildings and a triangular shaped yard is depicted on the 1838 OS map. The house is labelled as Farm Lodge on the 1910 OS Map. The house is present today along with some of the earlier outbuildings.	T9	730m east
CH1	Currallanty	Single storey vernacular cottage marked on the historic OS maps. Today the cottage is derelict and overgrown.	T11	750m southeast
CH2	Currallanty	A range of vernacular outbuildings remain extant within a larger modern farmyard. Marked on the historic maps, today many of the structures have been removed.	T11	750m south-southeast
CH20	Lacka	Two ruinous single storey vernacular cottages marked within the historic OS maps. The cottages are present today but in poor condition.	T6	820m west
CH21	Lacka	Ruined vernacular house and outbuilding, marked on the historic	T3	835m southwest



CH NO	TOWNLAND	DESCRIPTION	NEAREST ELEMENT	DISTANCE FROM PROPOSED PROJECT
		map editions. Today the structures are highly overgrown.		
CH24	Pallas	Renovated single storey cottage, with yellow brick reveals around the windows. The structure has been extended to the north.	T1	875m northwest
CH22	Lacka	Vernacular cottage marked on the 1910 OS map, which is now part of a larger modern farmyard.	T3	1.01km southwest
CH4	Kylenamuck	A house and outbuilding are marked here on all the historic maps. Today a single storey vernacular house remains here, with dormer roof and masonry outbuildings.	T1	1.08km north
CH5	Caherhoereigh	Single storey vernacular structure now in use as a cottage and marked on the 1910 OS map. Formerly part of a large rectangular yard, the eastern wall of which remains extant.	T1	1.08km north
CH31	Rath Beg	Single storey former level crossing cottage, now renovated and marked on the 1910 OS map.	T8	1.1km northeast
CH23	Lacka	Group of five derelict vernacular structures marked within the historic OS maps.	T3	1.2km southwest
CH11	Galbally	Single storey cottage with dormer level, now slightly extended but present on the 1910 OS map.	T11	1.25km south
CH19	Gortavally	Range of vernacular structures marked within the historic OS maps. Today the structures form part of a larger modern farmyard.	T10	1.29km southwest
CH8	Rath Beg	Raymount House is depicted on the 1838 OS map with a long tree lined avenue. The 1910 OS map labels the house as 'Wraymount'. Today the principal structure is extant and accompanied by a large number of outbuildings.	T9	1.36km east-northeast
CH32	Rath Beg	Former single storey vernacular cottage with dormer level. Marked on all historic map editions and now in use as an outbuilding within a larger farmyard.	T8	1.42m northeast
CH13	Rathcahill	Rathcahill House, a number of smaller outbuildings and a walled garden are marked on the historic OS maps. The main house remains present today along with some derelict outbuildings.	T11	1.43km southwest



CH NO	TOWNLAND	DESCRIPTION	NEAREST ELEMENT	DISTANCE FROM PROPOSED PROJECT
CH12	Galbally	Two-storey, four bay vernacular house, marked on the 1910 OS map. Now renovated and in good condition.	T11	1.43km southwest
CH10	Boveen	Vernacular house and outbuilding marked on all editions of the OS maps. The structures remain extant today with a larger modern farmyard.	T11	1.44km east
CH25	Tinnakilly	Farm house, marked on the 1910 OS map and a range of vernacular outbuildings, also marked on the 1838 OS maps. Today the buildings form part of a larger modern farmyard.	T1	1.46km north-northeast
CH30	Ballyegan	Ivy House, marked on the 1910 OS map with an outbuilding. Extant today.	T1	1.52km east
CH16	Galbally	Ruined single storey vernacular structure marked on the historic OS editions.	T11	1.61km south-southwest
CH18	Moneyshingaun	Single storey vernacular cottage and a range of outbuildings marked on all the historic OS maps. Today the structures remain present in good condition.	T10	1.64km southwest
CH29	Ballyegan	Single storey vernacular structure marked on the historic mapping. In use as an outbuilding within a larger farm.	T1	1.66km east
CH33	Sharavogue	Extensive range of outbuildings, some of which are derelict, associated with Sharavogue House. The main house is no longer present.	T9	1.69km east
CH17	Boveen	Boveen Lodge depicted and labelled on the 1910 OS map, along with a number of outbuildings. Today the main house remains present within a larger modern farmyard.	T11	1.75km east
CH28	Ballyegan	Single storey, stone built, former level crossing cottage, marked on the 1910 OS map.	T1	1.8km east-northeast
CH27	Ballyegan	Single storey vernacular cottage marked on all OS map editions. Now fully renovated.	T1	1.83km northeast
CH3	Tinnakilly	A house and outbuilding are marked here on all OS map editions. Today the structures remain present within a larger modern farmyard.	T1	1.84km north-northeast
CH26	Ballyegan	Single storey, stone built, former level crossing cottage, marked on the 1910 OS map.	T1	1.96km east-northeast



13.3.9.1 Toponymy of Townlands

Townland and topographic names are an invaluable source of information on topography, land ownership and land use within the landscape. They also provide information on history; archaeological monuments and folklore of an area. A place name may refer to a long-forgotten site and may indicate the possibility that the remains of certain sites may still survive below the ground surface. The Ordnance Survey surveyors wrote down townland names in the 1830's and 1840's, when the entire country was mapped for the first time. Some of the townland names in the proposed wind farm site and GCR are of Irish origin and through time have been anglicised. The main references used for the place name analysis is Irish Local Names Explained by P.W Joyce (1870) and logainm.ie. A description and possible explanation of each place name within the proposed wind farm site, GCR and TDR accommodation areas are provided in Table 13-11 below.

Table 13-11: Townlands within the proposed wind farm site, GCR and TDR accommodation areas

TOWNLAND	DERIVATION	POSSIBLE MEANING
Castletown	<i>Bhaile an Chaisleáin</i>	Town of the Castle
Cornhill	<i>Chnoc an Arbhair</i>	Hill of Corn
Clonfree	<i>Chluain Fraoigh</i>	Meadow of Heather
Cloonaheen	<i>Chluain Eichín</i>	Meadow of Eichín
Ballincor Demesne	<i>Baile an Mhaoiririgh</i>	Townland of the Marsh
Curralanty	<i>Currach an Leantaigh</i>	The Marsh of <i>An Leantach</i>
Pallas	<i>An Phailís</i>	The Palisade
Caherhoereigh	<i>An Cheathrú Riabhach</i>	The Grey Streaked Quarterland
Kylenamuck	<i>Coill na Muc</i>	The Wood of the Pig
Tinnakilly	<i>Tigh na Coille</i>	The House of the Wood
Ballyloughnane	<i>Baile Uí Lachnáin</i>	Town of Lachnáin
Killeen	<i>An Cillín</i>	Little Church
Croghan	<i>Cruachán</i>	Peak
Townparks	<i>Páirceanna an Bhaile</i>	Park of the Town
Woodfield or Tullynisk	<i>Tulchán na Sceach</i>	Mound of Hawthorn
Clondallow	<i>Cluain Dala</i>	Meadow of Dala
Sharavogue	<i>Searbhóg</i>	Bitter/unkind land



13.3.9.2 Townland Boundaries

The townland is an Irish land unit of considerable longevity as many of the units are likely to represent much earlier land divisions. The term townland was not used to denote a unit of land until the Civil Survey of 1654. It bears no relation to the modern word 'town' but like the Irish word *baile* refers to a place. It is possible that the word is derived from the Old English *tun land* and meant 'the land forming an estate or manor' (Culleton 1999, 174).

Gaelic land ownership required a clear definition of the territories held by each sept and a need for strong, permanent fences around their territories. It is possible that boundaries following ridge tops, streams or bog are more likely to be older in date than those composed of straight lines (ibid. 179).

The vast majority of townlands are referred to in the 17th century, when land documentation records begin. Many of the townlands are mapped within the Down Survey of the 1650s, so called as all measurements were carefully 'laid downe' on paper at a scale of forty perches to one inch. Therefore, most are in the context of pre-17th century landscape organisation (McErlean 1983, 315).

In the 19th century, some demesnes, deer parks or large farms were given townland status during the Ordnance Survey and some imprecise townland boundaries in areas such as bogs or lakes, were given more precise definition (ibid.). Larger tracks of land were divided into a number of townlands, and named Upper, Middle or Lower, as well as Beg and More (small and large) and north, east, south and west (Culleton 1999, 179). By the time the first Ordnance Survey had been completed a total of 62,000 townlands were recorded in Ireland.

Although not usually recorded as archaeological monuments in their own right, townland boundaries are important as cultural heritage features. It remains unclear how old some of these land units actually are, though it has been convincingly argued that many may date to at least the medieval period and, in some cases, may be significantly older than this (McErlean 1983; MacCotter 2008).

Five townland boundaries that will be crossed are located within the proposed wind farm and a further ten are crossed by the Proposed GCR. One townland boundary within the proposed wind farm site is wholly or partially defined by streams (Clonfree-Cloonaheen).

The GCR runs along local and regional roads before terminating north of Birr. The GCR crosses an number of townland boundaries as well as following along a number of the boundaries. The townland boundaries are shown on Figures 13-2a-d.

13.3.10 Field Inspection

The field inspection sought to assess the proposed wind farm, TDR and GCR, its previous and current land use, the topography and any additional information relevant to the assessment. During the course of the field investigation, which was carried out on the 20th August 2025, the proposed project elements and their immediate surrounding environs were inspected.

Proposed Wind Farm

The field inspection commenced at the site of Turbine 1, which is the northern most of the proposed turbines. The site and associated hard standing is located within a field of level pasture bounded by mature hedgerows (Plate 13.1). The access road will then run in a south-westerly direction across two fields of pasture (Plate 13.2) to the site of the proposed sub-station, BESS,



deposition area and borrow pit all of which are located to the northwest of proposed turbine 2. These elements of the proposed project are located within improved and more marginal pasture, which undulates, located to the west of raised bogland (Plates 13.3-5). This infrastructure will include the upgrade of an existing trackway for access (Plate 13.6).

The access road that will run to Turbine 3 travels south through mixed forestry, which was not accessible, and occupies the margins of raised bog. Turbine 3 is located in the commercial forestry and the access road will cross an area of the bog currently under turbary plots. The road to turbine 3 crosses an area of rough pasture, before entering the existing forestry (Plate 13.7). The access road will then run in a south-easterly direction through mixed forestry before a section turns northeast to the site of turbine 4. This turbine will be located in existing turbary plots, on the edge of raised bog (Plate 13.8-9).

The proposed access road continues in a southeast direction and crosses a field of pasture, to the site of turbine 5, which is also located in pasture on the edge of the raised bog (Plates 13.10-11).

The access road continues across four fields of pasture, adjacent to the raised bog, to a proposed junction. The junction is located within a level field of waterlogged pasture than is located between two areas of raised bog. A compound is also proposed at this location (Plate 13.12).

The site of turbine 7 is located in the field to the immediate west of the compound and junction. It occupies a northeast facing slope of pasture. From the site of turbine 7 the access road will run in a northwest direction to the site of turbine 6 and two proposed borrow pits. Turbine 6 occupies the western edge of pasture, which slopes to the northeast (Plate 13.13). The two borrow pits occupy two levels fields that are currently under arable production (Plates 13.14-15).

From the site of the compound, the access road will run through two fields of pasture, which are located within the Ballincor demesne (DL29). It then crosses a level field under arable production to the site of turbine 10 (Plates 13.16-17). The access road then crosses another three arable fields to the site of turbine 11 (Plates 13.18-19). The fields slope gently in a northeastern direction towards the raised bogland located directly to the northeast.

From the access road junction and compound, a road will run along the eastern side of the raised bog to the site of turbine 8 (Plate 13.20). This is located in rough, margin ground on the edge of the bog. From here the proposed road will run in a southeasterly direction through level pasture, west of the Little Brosna River (Plate 13.21). The site of turbine 9 is also located in this pasture, on the edge of the raised bog (Plate 13.22). The access road will continue in a southeasterly direction across rough marginal pasture, adjacent to the bogland (Plate 13.23). Adjacent to the R492 a new entrance will be constructed, along with a compound. This area is under rough scrub and small trees.

No specific features of archaeological potential were noted during the course of the field inspection, but the presence of raised bogland in the landscape, along with the Little Brosna River lends an overall archaeological potential to the proposed wind farm.

Proposed TDR

One intervention is required for the Proposed TDR and this comprises a new section of road measuring 140m that will provide access from the N62 to the R492. The road will cross a narrow field of pasture, which once formed part of the demesne associated with Sharavogue House (DL12). The field comprises overgrown pasture flanked by mature trees. A section of the stone



demesne wall associated with DL12 runs along the eastern side of the R492. The wall, where visible is of random rubble construction, but is heavily overgrown for the most part.

No specific features of archaeological potential were noted during the course of the field inspection, but the proposed TDR intervention will require the removal of a section of the demesne wall associated with Sharavogue House (DL12).

Proposed GCR

The proposed GCR will follow the existing L1071 in a northerly direction from the proposed wind farm. The existing road provides access to a number of modern residences and will be confined to the existing road carriage way until it reaches the site of BH18, which is an existing masonry bridge. Here the Proposed GCR will divert across two fields of pasture to the southeast of the road in order to avoid the bridge and will be installed by HDD. The fields undulate slightly but no previously unrecorded features were noted. In the village of Riverstown the Proposed GCR turns northwest along the R489. The road bounded DL2 to the southwest but the road is flanked by modern development today. The Proposed GCR then turns north along the L5045 and it passes to the immediate west of AH109, which is the site of a motte and bailey castle, which is also under a Preservation Order. Today the monument is heavily overgrown with trees and barely visible.

The Proposed GCR continues along the road in a northerly direction before turning east along the L1077/L70065. Here the road runs along the northern boundary of the demesne landscape associated with Birr Castle demesne (DL1). The boundary is formed by a tall roughly coursed masonry wall, which flanks the road for over 700m. The GCR will run along the existing road, with the exception of where the route crosses the Little Brosna River, to the north of the existing road bridge (BH68). Here the Proposed GCR will be directionally drilled beneath the river. The western river bank is planted with trees, whilst the eastern side of the river is formed by level pasture.

At the end of this road, the Proposed GCR joins the R439 and turns north. The GCR will be confined to the existing carriage way of the regional road until it turns northwest along an access road to the substation in Clondallow.

No specific features of archaeological potential were noted during the course of the inspection although the two areas where the Proposed GCR leave the road possess general archaeological potential due to the presence of watercourses in the landscape. A number of cultural heritage sites are located within the study area of the GCR but none of these are located within the footprint of the route.





Plate 13.1: Site of Turbine 1, facing east-northeast



Plate 13.2: Route of access road between Turbine 1 and 2, facing southwest



Plate 13.3: Site of Turbine 2 and proposed borrow pit, facing east-southeast



Plate 13.4: Site of proposed BESS and deposition area, facing east-northeast



Plate 13.5: Site of proposed BESS and sub-station, facing northwest



Plate 13.6: Existing access track to Turbine 2, facing northwest



Plate 13.7: Location of proposed access road to turbine 3, facing west-northwest



Plate 13.8: Location of turbine 4, facing east



Plate 13.9: Edge of raised bog, cut away by peat extraction in the turbary plots



Plate 13.10: Route of proposed access road to turbine 5, facing northwest



Plate 13.11: Site of turbine 5, facing southeast



Plate 13.12: Location of proposed compound and access road junction, facing east-southeast



Plate 13.13: Site of turbine 6 and access road, facing southeast



Plate 13.14: Location of proposed borrow pit to the north turbine 6, facing southeast



Plate 13.15: Location of proposed borrow pit to the south turbine 6, facing south



Plate 13.16: Location of access road to turbine 10, facing north-northwest



Plate 13.17: Site of turbine 10, facing south-southwest



Plate 13.18: Route of access road to turbine 11, facing northwest



Plate 13.19: Site of turbine 11, facing northwest



Plate 13.20: Site of turbine 8, facing southwest



Plate 13.21: Route of access road between turbine 8 and 9, facing southeast



Plate 13.22: Site of turbine 9, facing south



Plate 13.23: Route of access road to compound and southern access point

13.4 ASSESSMENT OF EFFECTS

13.4.1 Do-nothing scenario / Future Baseline

There will be no effects on the archaeological, architectural or cultural heritage resource if the proposed project does not go ahead.

13.4.2 Construction Phase

13.4.2.1 Proposed Wind Farm

The construction of the proposed wind farm will not result in any direct effects on recorded archaeological, architectural and cultural heritage sites.

The proposed wind farm occupies a landscape characterised by a mixture of pasture, arable, forestry and bogland. The general archaeological potential of the landscape is considered high due to the presence of the bogland and the Little Brosna River. While no surface features were noted in these areas the potential exists for the presence of subsurface archaeological sites, features or artefacts within such green field lands. As the existence, nature and extent of any unrecorded subsurface archaeological remains within the Site are unknown; the magnitude of potential impacts is indeterminable but ground works during the construction phase will have the potential to result in permanent, direct, negative effects on any unrecorded archaeological sites that may exist within the footprint of the construction areas in green field and forestry areas requiring ground excavation works. Effects, prior to the application of mitigation, have the potential to be moderate to very significant.

Ground disturbances associated with the construction phase will result in a direct, negative (long-term) effect on the demesne landscape associated with Ballincor House (DL29). This well-preserved landscape possesses high sensitivity and the magnitude of effect will be low, which will result in a slight significance of effect.

The construction phase will result in five direct, negative (permanent) effects on townland boundaries that separate Clonfree/Castletown, Castletown/Cronekill, Cronehill/Cloonaheen, Cloonaheen/Ballincor Demesne and Ballincor Demesne/Currallanty. These boundaries possess medium sensitivity but the magnitude of impact will be low, resulting in a slight significance of effect in each instance.

13.4.2.2 Proposed Turbine Delivery Route

The construction of the Proposed TDR will not result in any direct effects on recorded archaeological, architectural and cultural heritage sites.

The intervention for the Proposed TDR will require the construction of a temporary access road through 140m of greenfield. It is possible that ground disturbances associated with the construction phase have the potential to result in direct, negative (permanent) effects on archaeological remains that may survive beneath the current ground level, which do not possess surface expression. Effects, prior to the application of mitigation, have the potential to be moderate to significant, dependant on the nature, extent and significance of any such remains that may be identified.

The construction of the Proposed TDR will result in the removal of a section of demesne wall associated with Sharavogue House (DL12). The wall and overall demesne is of low sensitivity and the magnitude of impact is also low, as only a short section of wall will be removed. The significance of effect is not significant.

13.4.2.3 Proposed Grid Connect Route

The construction of the proposed GCR will not result in any direct effects on recorded archaeological, architectural and cultural heritage sites. The excavation of the trench required for the GCR will be located to the immediate west of AH109 (motte and bailey). Whilst an existing road is located here, it is possible that ground disturbances may result in a direct, negative (permanent) effect on features that may existing beneath the road that are associated with the castle site. Effects, prior to the application of mitigation, have the potential to be moderate to significant, dependant on the nature, extent and significance of any such remains that may be identified.

The construction of the Proposed GCR will be confined to the existing road network with the exception of two locations where the GCR will avoid two historic bridges (BH18 and BH68) and cross short sections of greenfield. It is possible that ground disturbances may result in a direct, negative (permanent) effect on features that may exist beneath the current ground level in these area, with no surface expression. Effects, prior to the application of mitigation, have the potential to be moderate to significant, dependant on the nature, extent and significance of any such remains that may be identified.



13.4.3 Operational Phase

13.4.3.1 Proposed Wind Farm

All sites of archaeological, architectural and cultural heritage significance identified within the 10 km, 5 km and 2 km study areas of the proposed wind farm site are listed in Appendix 13.3. Each site has been assessed in conjunction with the Theoretical Zone of Visibility mapping (Tip Heights) and photomontages produced by the Landscape and Visual specialists in Chapter 12. In some instances, there are no predicted effects due to the fact the proposed turbines will not be visible from certain places in the surrounding landscape, due to the topography.

No significant operational impacts are predicted in relation to sites of national or international significance.

A number of indirect moderate negative effects (medium term) have been identified in relation to AH, BH, DL and CH sites but no significant (or higher) negative effects. The assessment of all sites within the relevant study areas is included in Appendix 13.3. Moderate indirect, negative (medium term) effects are predicted in relation to the following sites:

AH48 Ringfort, AH97 Tower house and bawn, AH47/BH49 18th/19th century Ballincor House;

BH48 Corolanty House, BH50 Farm house and National School, BH24 Castletown House, BH58 Loughkeen House and Church, BH59 Ivy Hall House, BH32 gate lodge;

DL29 Ballincor House demesne, DL28 Corolanty House demesne, DL40 Glebe demesne, DL43 Carrig demesne, DL49 Raymount demesne;

CH14 Derelict vernacular buildings, CH15 Ruined vernacular house and outbuildings, CH8 Wraymount House, CH13 Rathcahill House

13.4.3.2 Proposed Turbine Delivery Route

The operation of the Proposed TDR will not result in any operational impacts on the archaeological, architectural or cultural heritage resource.

13.4.3.3 Proposed Grid Connection Route

The operation of the proposed GCR will not result in any operational impacts on the archaeological, architectural or cultural heritage resource.

13.4.4 Decommissioning Phase

The proposed wind farm including wind turbines and BESS are expected to have a lifespan of 35 years. The BESS will be decommissioned at the end of the operational life of the proposed project. Following the end of their useful life, the wind turbines may be replaced with a new set of machines, subject to planning permission being obtained, or the site will be decommissioned fully, with the exception of the on-site substation and site roads and drainage.

Upon decommissioning of the proposed wind farm site, the wind turbines will be disassembled in reverse order to how they were erected. All above ground turbine components will be separated, cut up to allow them fit on a standard articulated lorry and removed off-site for recycling.



Turbine foundations will remain in place underground and along with hardstands will be allowed to revegetate naturally. Leaving the turbine foundations and hardstands in-situ is considered a more environmentally prudent option, as to remove that volume of reinforced concrete and stone from the ground could result in potentially needless environment nuisances such as noise, dust and/or vibration. There would be no real environmental benefit from removing the foundations, as the concrete is underground, stable and inert if untouched. The site roadways will be in use for additional purposes to the operation of the wind farm (e.g. for forest/agricultural access) by the time the decommissioning of the project is to commence, and therefore it is more appropriate to leave the site roads in situ for future use.

The on-site substation and 110kV grid connection will not be removed at the end of the useful life of the proposed wind farm project as it will form part of the national electricity network. Therefore, the substation will be retained as a permanent structure and will not be decommissioned.

The decommissioning of the proposed project will not have any negative effects on the archaeological, architectural or cultural heritage resource as no new ground disturbances will be introduced that may affect buried archaeological remains.

13.5 MITIGATION MEASURES

13.5.1 Construction Phase

13.5.1.1 Proposed Wind Farm

Prior to the commencement of construction, a programme of archaeological test trenching will be carried out at the greenfield locations of the proposed wind farm. This work will be carried out under licence to the National Monuments Service of the DoHLGH. Dependent on the results of the testing assessment, further mitigation may be required, such as preservation by record or in-situ and/or archaeological monitoring. Any further mitigation will require agreement from the DoHLGH.

No mitigation with regards to Ballincor demesne landscape is required as the nature and extent of the landscape is well recorded and understood within the historic mapping record and aerial photographic coverage.

All townland boundary interventions required for the proposed wind farm will be subject to archaeological monitoring. This work will be carried out under licence to the National Monuments Service of the DoHLGH and will include a full record of the sections of boundaries removed.

13.5.1.2 Proposed Turbine Delivery Route

The route of the new access road will be subject to archaeological monitoring during construction. This will be carried out under licence to the National Monuments Service of the DoHLGH. If any archaeological remains are identified further mitigation may be required, such as preservation by record or in-situ. Any further mitigation will require agreement from the DoHLGH.

The section of demesne wall associated with Sharavogue House (DL12) will be cleared of vegetation prior to the commencement of construction and a full written and photographic record of the wall will be made. The removal of the wall will be subject to archaeological monitoring as described above. The wall will be reinstated following the completion of works.



13.5.1.3 Proposed Grid Connection Route

The excavation of the proposed GCR trench, where it passes to the west of AH109 will be subject to archaeological monitoring during construction. This will be carried out under licence to the National Monuments Service of the DoHLGH. If any archaeological remains are identified further mitigation may be required, such as preservation by record or in-situ. Any further mitigation will require agreement from the DoHLGH.

The excavation of the GCR launch/reception pits for the directional drilling at BH 18 and BH68, will be subject to archaeological monitoring during construction. This will be carried out under licence to the National Monuments Service of the DoHLGH. If any archaeological remains are identified further mitigation may be required, such as preservation by record or in-situ. Any further mitigation will require agreement from the DoHLGH.

13.5.2 Operational Phase

As detailed in Appendix 13-3, potential indirect effects have been identified upon the archaeological, architectural and cultural heritage resource within the study area of the proposed project, although none are deemed to be significant negative or higher. Due to the constructed form of the proposed turbines, it is not possible to mitigate indirect effects on the setting of archaeological, architectural or cultural heritage sites.

13.5.3 Decommissioning Phase

No mitigation is required for the decommissioning phase, as no effects are predicted.

13.6 RESIDUAL EFFECTS

Following the implementation of the above construction mitigation measures, there will be no significant residual effects on the previously unrecorded archaeological resource. This is due to the fact that any archaeological remains that are encountered during the course of monitoring or test trenching will be subject to preservation by record or preservation in-situ. Residual effects will remain with regards to the setting of archaeological, architectural and cultural heritage sites, due to the fact that the effect on the setting of the sites cannot be mitigated, but these effects will not be significant or permanent.

13.7 CUMULATIVE EFFECTS

With regards to proposed project, the assessment is required regarding the potential cumulative effect that may arise from permitted developments within the study area of the proposed wind farm site, GCR and TDR and how the construction and operation of this infrastructure (in combination with the proposed project) may cumulatively impact upon archaeological, architectural and cultural heritage sites.

All proposed or permitted wind farm developments within 10 km of the proposed Ballincor Wind Farm were assessed for cumulative effects. A seven turbine wind farm (Carrig (AIR¹) Wind Farm) is proposed c. 4km northwest of the proposed wind farm. When the two projects are assessed in combination, no greater predicted effects upon the archaeological, architectural or

¹*Atlantic Infrastructure Renewables



cultural heritage resource have been identified that are greater than those effects predicted as part of either project.

No other proposed developments have been identified within the study areas of the proposed Project that will result in cumulative effects on the archaeological, architectural and cultural heritage resource. This is due to the fact that if any archaeological remains are identified during construction, they will be preserved in-situ or by record.

13.8 CONCLUSION

The proposed wind farm is primarily comprised of forestry, cutover peatland and agricultural fields. There is one recorded monument within the proposed project, which comprises a tower house and associated bawn (AH 97). The site of the recorded monument is located c. 695m north-northwest of Turbine 1.

There are 109 individual or groups of recorded archaeological sites located within the 5 km study area of the proposed wind farm, including three redundant records.

There are 70 individual or groups recorded structures of architectural merit present within the study areas of the proposed project. Furthermore, 36 previously unrecorded sites of cultural heritage significance have been identified within the study areas of the proposed project as part of this assessment.

There is one site included on the tentative list for World Heritage Property status located within the 10km study area, which comprises the Birr Castle Demesne Great Telescope (The Leviathan, 1845, BH2). Science galleries have been established at Birr Castle, which complement the historic nature of the demesne and research in astronomy began again at Birr Castle in 2010, with the construction of the Rosse Solar Terrestrial Observatory, and of a node of the international LOFAR radio telescope in 2017 (I-LOFAR), which are located c. 315m southwest of the Great Telescope, within the original demesne landscape associated with Birr Castle. These features are located c. 4.96km to the nearest turbine, while the substation and all other turbines are >5 km.

There are two National Monuments located within the 10 km study area of the proposed wind farm. These comprise Lismacrory Mounds (AH77, Nat Mon No. 348), c. 4.63km to the west and Lackeen Castle (AH28, Nat Mon No. 378), c. 9.23km northwest.

There is one site that possesses a Preservation Order within the 10 km study area of the proposed wind farm. Ballycurragh Hillfort (AH25, PO No. 23/1976), c. 9.23km northwest.

There are 53 designed landscapes shown on the first edition OS map of 1838 and 1840 within the study areas of the proposed project, including 33 gardens recorded within the NIAH Garden Survey. In addition, 36 cultural heritage sites have been identified within the study areas of the proposed project. These represent sites of heritage merit, which are not subject to statutory protection.



13.9 REFERENCES

- Byrne, F. J. 1973. *Irish Kings and High-Kings*. London: Batsford.
- Cahill Wilson, J. 2014. *Late Iron Age and Roman Ireland*, Discovery Programme Report Series No. 8, Discovery Programme. Dublin. Wordwell.
- Culleton E. (ed.) 1999. *Treasures of The Landscape; Townland Names by An Tathair Seamas S. De Vaal* Dublin: Trinity College.
- Department of Arts, Heritage, Gaeltacht and the Islands. 1999a *Framework and Principles for the Protection of the Archaeological Heritage*. Dublin. Government Publications Office.
- Department of Arts, Heritage, Gaeltacht and the Islands. 1999b *Policy and Guidelines on Archaeological Excavation*. Dublin. Government Publications Office.
- Dowd, M. and Carden, R. 2016 *First evidence of a Late Upper Palaeolithic human presence in Ireland*. *Quaternary Science Reviews*: 158-163.
- Environmental Protection Agency. 2015 *Draft Advice Notes on Current Practice (in the preparation of Environmental Impact Statements)*. Dublin. Government Publications Office.
- Environmental Protection Agency. 2022 *Guidelines on the Information to be Contained in Environmental Impact Statements*. Dublin. Government Publications Office.
- Offaly County Development Plan (2021–2027)
- Tipperary County Development Plan (2022–2028)
- Hawkes, A. 2018. *The Archaeology of Prehistoric Burnt Mounds in Ireland*. Oxford. Archaeopress.
- Horner, A. 2006. *Mapping Offaly in the early nineteenth century: with an atlas of William Larkin's map of King's County, 1809*. Bray. Wordwell.
- MacCotter, P. 2008. *Medieval Ireland: Territorial, political and economic divisions*. Dublin. Four Courts Press.
- McErlean, T. 1983. "The Irish townland system of landscape organisation". In Reeves-Smyth, Terence; Hamond, Fred (eds) *Landscape Archaeology in Ireland BAR British Series 116*.
- National Monuments Service, Department of Housing, Local Government and Heritage, County Offaly and Tipperary.
- O'Sullivan, A., McCormick, F., Kerr, T.R., Harney, L. 2014. *Early Medieval Ireland, AD 400-1100: The Evidence from Archaeological Excavations*. Dublin. Royal Irish Academy.
- Plummer, C. 1910. *Vitae Sanctorum Hiberniae. Volume 1*. Oxford. Clarendon Press.
- Stout, G. and Stout, M., 1997. *Early Landscapes: from Prehistory to Plantation*. In: F.H.A. Aalen, F.H.A., Whelan, K. and Stout, M., (eds.) *Atlas of the Irish Rural Landscape*. Cork: Cork University Press.
- Stout, M. 1997. *The Irish Ringfort*. Dublin. Four Courts Press.
- Topographical Files of the National Museum of Ireland. County Offaly and Tipperary.
- Waddell, J. 2022. *The Prehistoric Archaeology of Ireland (New Edition)*. Dublin. Wordwell.

Cartographic Sources



Down Survey of the Barony of Clonliske, in the County of Offaly, 1657

Down Survey of the Barony of Lower Ormond, in the County of Tipperary, 1657

Ordnance Survey Mapping of County Offaly, 1838, 1910

Ordnance Survey Mapping of County Tipperary, 1840, 1902

Electronic Sources - Accessed Oct 2025

www.archaeology.ie – DoHLGH website listing all SMR/RMP/NIAH sites.

www.bing.com – Satellite imagery of the proposed project area.

www.booksulster.com/library/plnm/placenamesC.php - Contains the text from Irish Local Names Explained by P.W Joyce (1870).

www.excavations.ie – Summary of archaeological excavation from 1970-2025.

www.googleearth.com – Satellite imagery of the proposed project area.

www.heritagemaps.ie – The Heritage Council web-based spatial data viewer which focuses on the built, cultural and natural heritage.

www.logainm.ie – Placenames Database of Ireland launched by Fiontar agus Scoil na Gaelige and the DoHLGH.

www.whc.unesco.org/en/tentativelists/6901/ - Tentative Lists, The Historic Astronomical Observatories of Ireland

<https://dcenr.maps.arcgis.com/apps/webappviewer/index.html?id=b7c4b0e763964070ad69bf8c1572c9f5> – Open Topographical Data Viewer

